

**ROYAL
ENFIELD
OWNER'S
MANUAL**

HIMALAYAN

USA/CALIFORNIA

FOREWORD

Welcome to your new Royal Enfield Himalayan.

The all-new Himalayan is a creature of its environment. A profound, mystical space that is always changing, and changing fast.

There was no one machine designed for this journey. Until now. The all-new Himalayan has many motorcycles rolled into one.

It adapts to the terrain. It adapts to the rider. It adapts to the elements.

With its new 452cc liquid cooled Sherpa engine and 6 speed gearbox ready for any situation. Featuring for the first time, the Tripper (TM) upwards Dash with full map navigation, and a whole host of adventure-ready features for your rides - whether its a multi-week ride to the Himalayas or a 30 minutes ride through the city.

This is your capable, purpose-built and versatile machine built to explore the Himalayas and anywhere else your adventure takes you.

The new Royal Enfield Himalayan.

Built by the Himalayas

#AllRoadsNoRoads

- Team Royal Enfield

NOTICE

All information in this manual is based on the latest product information available at the time of publication. Due to continuous improvements, there may be differences between the information provided in this manual and information related to your motorcycle.

Always consult an authorized Royal Enfield dealer for the latest specifications, features etc. Royal Enfield reserves the right to make production changes at any time without prior notice and without incurring any obligation to make the same or similar changes to a motorcycle previously built or sold. All images shown are for reference to explain and need not to be exactly the same on the model you own. Accessories and features may not be part of standard equipment. Technical specifications are subject to change without prior notice at the sole discretion of Royal Enfield.

Please take care while disassembling and assembling the seats, and sheet metal parts, as any sharp edges will lead to injuries.

"© Copyright 2024 Royal Enfield (A unit of Eicher Motors Ltd.). All Rights Reserved. No part of this manual shall be copied, distributed or otherwise dealt without the express permission in writing from Royal Enfield".

DISCLAIMER

1. Do not polish matt finished paint surface in your motorcycle as it will increase the gloss level.
2. Wash the painted parts only with plain water and do not use any strong solvents cleaning agents or detergents.
3. Scratches, if happens on the matt finish parts cannot be touched up and corrected / removed.
4. Warranty is not applicable for any matt finished painted parts of the motorcycle.

Toll Free No : 1-866-600-1122

Email ID : U.Scustomerservice@royalenfield.com

Part No.RAM00826/B /13th November 2024

IMPORTANT

United States Environment Protection laws, Federal Motor Vehicle Safety Standards and California Air Resources Board (Applicable only for motorcycles sold within the state of California.) strictly prohibits tampering with the Exhaust Emission Control, Noise Control and Evaporative Emission Control systems:

We would like to emphasize that any repairs to the induction, emission, exhaust and evaporative systems must be performed only by a Royal Enfield Authorized Dealer so that the motorcycle conforms to the United States Environment Protection laws, Federal Motor Vehicle Safety Standards and California Air Resources Board regulation (Applicable only for motorcycles sold within the state of California.)

It is the responsibility of the Owner/User of the motorcycle to read this manual carefully and to comply with the safety guidelines, operating instructions and periodical maintenance instructions given here. Keep this manual in a convenient place for easy reference. Do not use the motorcycle until you have become familiar with this motorcycle and after reading and understanding this manual completely. In case you need any further clarifications, please contact a Royal Enfield Authorized Dealer, nearest to you, for assistance.

If your motorcycle is being used by a friend, relative, or any other person, it is your responsibility to make certain that they have completely understood the operating procedures of the motorcycle and the contents in this manual with particular reference to the safety aspects, before riding your motorcycle.

This motorcycle is designed for normal on road use only. Operation in off-road usage in some areas may be illegal and could be dangerous. Please obey local laws and regulations.

In the event of your motorcycle being sold to another person, it is your responsibility to hand over this manual along with the motorcycle to the new owner.

REPORTING SAFETY DEFECTS

If you believe your motorcycle has a defect which could cause a crash and result in serious injury or loss of life, you should immediately contact the National Highway Traffic Safety Administration (NHTSA) in addition to notifying Royal Enfield North America Limited, 226 N Water St., Milwaukee WI 53202 US.

If NHTSA receives similar complaints, it may open an investigation and if it finds that a safety defect exists in a group of vehicles, it may order a recall and remedy campaign. However, NHTSA cannot become involved in any individual problems between you, and your dealer or Royal Enfield North America Limited.

To contact NHTSA you may call the Auto Safety Hotline toll-free within the United States on 1-800-424-9393 or write to: NHTSA, 400 Seventh Street SW, Washington, DC 20590. You can also obtain other information about motor vehicle safety from the hotline.

CONTENTS

Safety definitions	6	Minor maintenance tips	83
Personal and motorcycle information.....	7	Long trip precautions	116
Safe riding tips / guidelines	8	Rear suspension setting	117
Rules of the road	12	Cleaning procedure	119
Accessories and luggage	14	Storage precautions	121
Technical specifications	16	Troubleshooting.....	122
Recommended lubricants	21	Environment care.....	124
Motorcycle identification numbers.....	22	Periodical maintenance.....	125
Location of key parts.....	24	General warranty terms and conditions.....	131
Operation of controls	27	Borderless warranty terms and conditions	138
Warning indications and safety systems.....	67	Customer's Responsibility.....	140
Pre-operational checks	71	Limitation Of Liability	140
Running in period	72	Emission control system warranty.....	141
Starting.....	73	Noise control system warranty	147
Gear shifting, riding and stopping.....	77	Evaporative emission control system warranty.....	149
Parking	80	Radio type approval	151
Tools kit	82	Service / Maintenance record	153
		Wiring diagram	154
		Notes	155

SAFETY DEFINITIONS

The information given under the titles: Warning, Caution and Note are for your safety and for the care and safety to your motorcycle and others. Please read these carefully and if disregarded may result in injury to yourself or others and damages to the motorcycle.



WARNING

Indicates a potentially hazardous situation. Disregarding this message may result in injury to rider or other persons.

CAUTION

This message, if disregarded, may result in damage to the motorcycle.

NOTE

Indicates important and useful messages for better understanding.

PERSONAL AND MOTORCYCLE INFORMATION

Name											
Door No. / Street											
Locality / Town											
City								Country			
Contact No.	Res:							Off:			
	Mobile:							Email:			
Licence No.								Valid till:			
Model								Color:			
Engine No.											
VIN. No.											
Tyre Make	Front:							Rear:			
Tyre Nos.	Front:							Rear:			
Battery make							Battery No.				
Sold by											
Date of Sale											

SAFE RIDING TIPS / GUIDELINES

- Before operating your new motorcycle, we request you to carefully read and follow the operating and maintenance instructions detailed in this manual for the safety of your own, your motorcycle and also that of others.
- Know and adhere to the rules of the road with respect to your driving country.
- Before starting the motorcycle, check for proper operation of brakes, clutch, gear shifter, handle bar controls, tyre pressures, fuel and oil levels, etc.
- Use only genuine Royal Enfield spare parts and approved accessories. Use of other manufacturer's parts may affect the performance of your motorcycle and render the motorcycle void of warranty. Visit your Royal Enfield Authorised Service Centre for details.
- Whenever refueling your motorcycle, please exercise utmost caution and carefully observe the following guidelines.
 - ★ Switch "OFF" mobile phones and other hand held electronic devices.
 - ★ Do not smoke and please ensure that there are no open flames or sparks near the motorcycle, when refueling or servicing the fuel system.
 - ★ Refuel in a well ventilated area with the engine turned off condition.
 - ★ Open the fuel tank cap slowly.
 - ★ Do not fill the fuel in tank to its brim. Please fill fuel till the bottom of anti splash plate, so as to leave sufficient air space in the fuel tank to allow for fuel expansion.

SAFE RIDING TIPS / GUIDELINES



WARNING

Royal Enfield cautions you against the use of certain non-standard parts such as aftermarket and custom made extended front forks or suspensions, which may adversely affect performance and handling. Removing or altering original parts may adversely affect performance and could result in accident.

- A new motorcycle must be operated according to the special running-in-procedure. See running-in-procedure mentioned in respective section.
- Operate motorcycle only at moderate speeds and out of traffic until you have become thoroughly familiar with its operation and handling characteristics under all conditions.

- Do not exceed the legal speed limit or ride too fast for existing conditions. Always reduce speed when poor riding conditions exist. High speed increases the influence of any other condition affecting stability and increases the possibility of loss of control.

NOTE

If you are an inexperienced rider we recommend that you obtain formal training on correct motorcycle riding techniques and become thoroughly familiar with the operation of your motorcycle. New riders should gain experience under various conditions while driving at moderate speeds. Pay strict attention to road surfaces and wind conditions. Any motorcycle may be subject to the following up-setting forces:

- ★ Wind blasts from passing vehicles.
- ★ Rough or uneven road surfaces.

SAFE RIDING TIPS / GUIDELINES

★ Slippery road surfaces.

These forces may affect the handling characteristics of your motorcycle. If this happens, reduce speed of the motorcycle to a controlled condition. Do not apply brake abruptly.

- Operate your motorcycle defensively. Remember that a motorcycle does not afford the same protection as an automobile in an accident. One of the most common accident situations occurs when the rider / driver of the other motorcycle / vehicle fails to see or recognise a motorcycle and turns into the oncoming motorcyclist.
- Wear an approved helmet, clothing and footwear suited for riding a motorcycle. Bright / light colours are best for greater visibility in traffic, especially at night. Avoid loose, flowing garments and scarves.
- When carrying a pillion rider, it is your responsibility instruct them on proper riding procedures.

- Do not allow other individuals, under any circumstances, to operate your motorcycle unless you know they are experienced, licensed riders and are thoroughly familiar with the operating conditions of your motorcycle.



WARNING

- Regularly inspect shock absorbers and front forks and look for leaks. Replace worn out parts. Worn out parts can adversely affect stability and handling.
- Exhaust gas contains poisonous carbon monoxide and chemicals, known to cause cancer, birth defects or other reproductive defects, durability / longevity operation of your motorcycle.
- For your personal welfare, all the listed service and maintenance recommendations should be performed. Lack of regular maintenance at the suggested intervals may affect the safe/durability/longevity operation of your motorcycle.

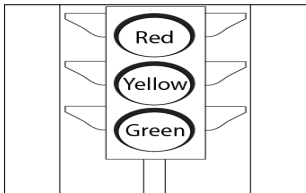
SAFE RIDING TIPS / GUIDELINES

- Avoid any contact with the exhaust system when hot. Wear clothing that will completely cover the legs while riding. The exhaust system gets very hot when the engine is running and remains too hot to touch, even after the engine is turned OFF. Failure to wear proper or protective clothing could result in serious injury.
- Motorcycle batteries contain lead, acids and chemicals known to cause cancer, birth defects or other reproductive harm. Exercise extreme caution while handling a battery, wash hands thoroughly whenever a battery is handled.
- Consult your Royal Enfield Authorised Service Centre regarding any questions or problems that occur in the operation of your motorcycle. Failure to do so may aggravate an initial problem, cause costly repairs and jeopardize your personal safety.
- Do not tow a motorcycle. The steering and handling of the towed motorcycle will be impaired due to the force of the towline. If a motorcycle must be transported, use a truck or a trailer.
- Do not pull a trailer behind a motorcycle. Towing a trailer may cause reduced braking efficiency, tyre overloading and unstable handling, as it may cause loss of control of the motorcycle in the front, leading to an accident.

RULES OF THE ROAD

- Be sure your number plate is installed in the position specified by law and it is clearly visible at all times.
- Ride at a safe speed that is consistent with the type of road surface you are on. Pay strict attention while riding on the following surfaces:
 - ★ Dusty
 - ★ Oily
 - ★ Icy
 - ★ Wet
 - ★ Sand
- Watch for loose debris, such as leaves, slippery substances or gravel that can hamper the stability of your motorcycle.
- Keep to the correct side of the road center line, when meeting oncoming vehicles.
- Actuate your turn signals and exercise caution when passing other vehicles going in the same direction. Never try to pass another vehicle going in the same direction at street intersections, on curves, or when going up / or down a hill.
- At street intersection give the right-of-way to the motorcycle on your left or right. Do not presume you have the right-of-way.
- Adhere to the rules of the road with respect to your country when preparing to stop, turn or pass. While turning either right or left, watch for pedestrians, animals, as well as other vehicles.
- All traffic signs, including manual controls at intersections, should be obeyed promptly. Slow down at traffic signs near schools and caution signs at rail road crossings.
- When intending to turn, signal at least 100 feet (30.5 m) before reaching the turning. Be close to the center line (unless local rules require otherwise), slow down and then turn carefully.
- Never jump a traffic light. When a change is imminent from go to stop (or vice versa) at intersections, slow down and wait for the light to change to green. Never run through a yellow or red traffic light.

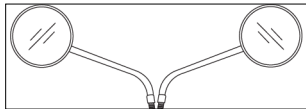
RULES OF THE ROAD



- Do not leave the curb or parking area without signaling. Be sure your way is clear to enter moving traffic. A moving line of traffic always has the right-of-way.
- When parking the motorcycle, park on a firm and flat surface to prevent it from falling over.
- Protect your motorcycle against theft. After parking your motorcycle, ensure that the steering head is locked and then remove the ignition key.

SIDE VIEW MIRRORS

Your motorcycle is equipped with convex mirrors and have a curved surface.



This type of mirror is designed to give a much wider view of the rear than a normal flat mirror. However, vehicles and other objects seen in this type of mirror will look smaller and farther away than when seen in a flat mirror. Use care when judging the size or distance of vehicles / objects seen in these mirrors. Use the tool available in tool kit to loosen and adjust the side mirrors.

NOTE

To establish the relative distance of vehicles / objects behind your motorcycle through the mirrors, adjust each mirror in such a way, that a small portion of your shoulder is visible and a large portion behind your motorcycle is seen clearly with reference to your riding posture.

ACCESSORIES AND LUGGAGE

Royal Enfield offers a range of Genuine Motorcycle Accessories that have been fully approved and extensively tested alongside the motorcycle.

Therefore, the rider must be responsible for safe operation of the motorcycle when installing accessories or carrying additional weight.

Please adhere to the following guidelines when carrying a pillion, luggage or when fitting any accessories.

- Do not exceed 110 km/h (68.3 mph) when riding solo, carrying a pillion or payload on an accessory equipped motorcycle.
- Keep luggage weight concentrated close to the motorcycle and as low as possible; this minimizes sudden shift in the motorcycle's center of gravity.
- Distribute weight evenly on both sides of the motorcycle.

- Do not load bulky items behind the rider or add weight to the handlebars or front forks.
- Re-check the luggage periodically to ensure it is secured and will not shift while riding. Accessories mounted loosely may affect the riding of the motorcycle and affect the handling and stability of the motorcycle.
- Large surfaces such as fairings, windshields, backrests and luggage racks can adversely affect handling of the motorcycle. Use only Royal Enfield genuine motorcycle accessories which are model specific and follow installation procedure.

ACCESSORIES AND LUGGAGE



WARNING

- Do not load weight or install accessories incorrectly on the motorcycle. Doing so may affect the motorcycle's stability, handling characteristics and safe operation and could result in an accident causing serious injury or loss of life.
- Royal Enfield offers a range of Genuine Motorcycle Accessories that have been fully approved and extensively tested alongside the motorcycle.
- Royal Enfield cautions you against use of nonstandard parts such as aftermarket and custom made extended front forks which may adversely affect the performance and handling of the motorcycle. Removing or altering original parts may adversely affect the perfor-

mance of the motorcycle, causing an accident, which could result in serious injury or loss of life.

- Do not ignore model / design specifications. Doing so constitutes both motorcycle and accessories misuse which may adversely affect the handling and performance of the motorcycle causing an accident, which could result in serious injury or loss of life.

LUGGAGE CATEGORIES

- Do not exceed the maximum payload as defined in the GMA fitting instructions for panniers and top boxes.

TECHNICAL SPECIFICATIONS

ENGINE

Engine type	Single cylinder, 4 stroke, DOHC, SI Engine, Water cooled, Fuel Injection
Bore	84 mm
Stroke	81.5 mm
Swept volume	452 cc
Compression ratio	11.5:1
Max power	29.44 kW @ 8000 rpm
Max torque	40 Nm @ 5500 rpm
Idle RPM	1300 rpm
Starting.....	Electric start
Air filter element	Paper element

Lubrication	Semi-dry sump
Cooling	Water cooled

IGNITION SYSTEM

Ignition	ECU controlled
Spark plug.....	Champion
Spark plug gap.....	0.8 mm to 0.9 mm

TECHNICAL SPECIFICATIONS

TRANSMISSION

Clutch	Wet multi plate, slip and assist
Primary drive	Gear
Primary ratio.....	2.028:1
Gear box	6 Speed
Gear ratio.....	1 st 3.083 :1
	2 nd 2.059:1
	3 rd 1.600:1
	4 th 1.286:1
	5 th 1.087:1
	6 th 0.958:1
Secondary drive.....	Sprockets and chain (5/8 Pitch)

Secondary ratio 3.133:1

CHASSIS

Frame..... Steel, twin spar tubular frame

Suspension

Front..... Upside down fork, 43 mm,
front wheel travel 200 mm

Rear Linkage type mono-shock,
rear wheel travel 200 mm

Brakes

Front disc..... Hydraulic disc brake, 320 mm
ventilated disc, double piston
caliper

Rear disc Hydraulic disc brake, 270 mm
ventilated disc, single piston
caliper

Brake system..... Dual channel ABS, Switchable

TECHNICAL SPECIFICATIONS

Type of wheel	Tyre size
Front (Spokes wheel)	90/90-21 M/C 54H CEAT (Gripp RE F) (With tube)
Rear (Spokes wheel)	140/80R17 M/C 69H CEAT (Gripp Rad steel RE) (With tube)

Type of wheel	Solo & With pillion
Front & Rear	32 psi

Steering lock..... Inbuilt

Fuel type..... Unleaded gasoline

Induction Electronic fuel injection,
42 mm throttle body, ride by
wire system

Fuel tank capacity..... 17.0* L

Low fuel warning..... 3 L ± 0.5* L

Dead stock..... 0.95 L to 1.15* L

* The above values are approximate and the actual fuel filling capacity will vary from the values mentioned.

TECHNICAL SPECIFICATIONS

ELECTRICALS

Alternator output	280 W @ 1200 rpm
Generation.....	Alternator, III Phase
System.....	12 V - DC
Battery.....	12 V - 8 Ah VRLA
Head lamp	12 V, FPL 1.5 W LED, low beam 12.12 W, high beam + low beam 14.22 W
Brake lamp	12 V, 1.59 W x 2 nos
Tail lamp	12 V, 0.26 W
License plate illuminator	12 V - LED
Instrument cluster	Colour TFT (Thin Film Transistor)

Turn signal	Front - 12 V, 2.98 W x 1 no Rear - 12 V, 1.59 W x 1 no
Hazard warning	Front - 12 V, 2.98 W x 2 nos Rear - 12 V, 1.59 W x 2 nos
Horn.....	12 V, 2.5 A
Starter motor	12 V - 0.7 kW
Charger port.	USB 2.0 Type C - 5 V, 2 A output



WARNING

Using bulbs/electrical gadgets other than specified rating will lead to overloading/erratic behavior/premature failure of electrical system.

Modifications or fitments which are not approved by Royal Enfield, will seriously affect the performance of the vehicle and will render the warranty void.

TECHNICAL SPECIFICATIONS

DIMENSIONS

Length	2245 mm
Width.....	852 mm
Standard seat height	Adjustable 825 mm to 845 mm
Low seat height	Adjustable 805 mm to 825 mm
Height.....	1316 mm
Wheelbase.....	1510 mm
Ground clearance	224 mm

WEIGHTS

Kerb weight (90% fuel and oil)	198 kg
Gross vehicle weight	394 kg

NOTE

- Values / Dimensions given above are for your guidance only.
- In view of continuous improvements being done on our products, the specifications are likely to change without prior notice.
- Do not use the vehicle beyond the allowed gross weight. The suspensions and tyres are designed to perform only to the maximum gross vehicle weight.

RECOMMENDED LUBRICANTS

ENGINE OIL		COOLANT	FRONT FORK OIL	BRAKE FLUID
Grade	10W40 API SN, JASO MA2, Semi Synthetic	TOTAL COOLELF AUTO SUPRA -37 °C	SS-47G	DOT 4*
Capacity	1st dry fill: 2.4 L	Radiator: Dry fill - 915 ml Service fill - 815 ml	RH fork: 589 ± 2.5 ml	Front - 90 ± 5 ml
	Refill: 2.1 L for oil service (Including filter change)	Expansion Tank: Fill to max mark - 240 ml	LH fork: 507 ± 2.5 ml	Rear - 80 ± 5 ml

* Do not mix DOT 4 or other brake fluid together.

NOTE

1. Coolant is ready to use and does not require mixing.
2. Recommendation subject to change without notice.
3. The above values are approximate and the actual capacity will vary.

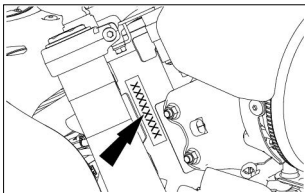
CAUTION

Use of wrong oil grade will reduce the life of the moving parts and seriously affect performance.

MOTORCYCLE IDENTIFICATION NUMBERS

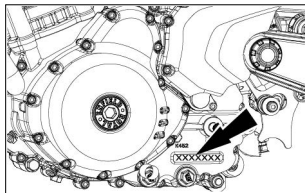
FRAME NUMBER

The VIN is a 17 digit number punched on the right side steering head tube in the form of punching.



ENGINE NUMBER

The engine number is punched on the bottom of gear pedal connector rod.



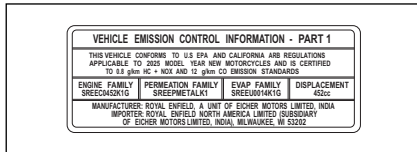
CAUTION

It is illegal to tamper with or alter the VIN/Engine numbers of the motorcycle as it will not only be against the law but will render the vehicle registration and warranty void.

MOTORCYCLE IDENTIFICATION NUMBERS

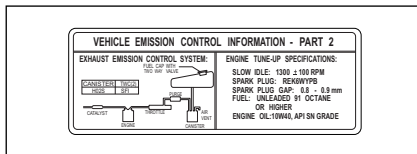
EMISSION LABEL 1

Pasted on RH frame loop tube.



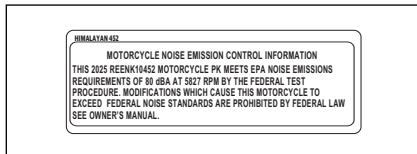
EMISSION LABEL 2

Pasted on LH frame loop tube.



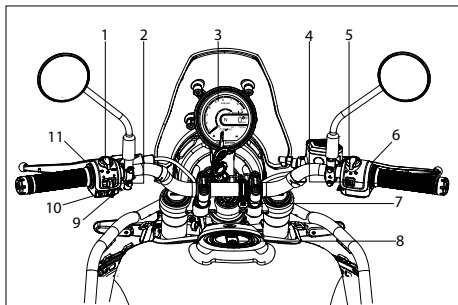
NOISE LABEL

Pasted on RH frame loop tube.



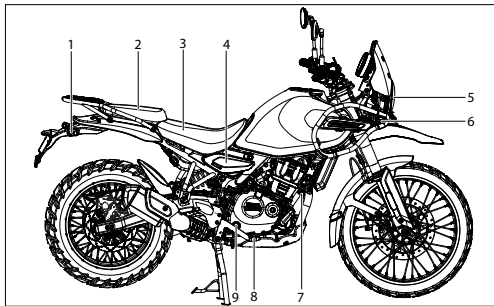
These Labels Applicable for USA and CALIFORNIA.

LOCATION OF KEY PARTS



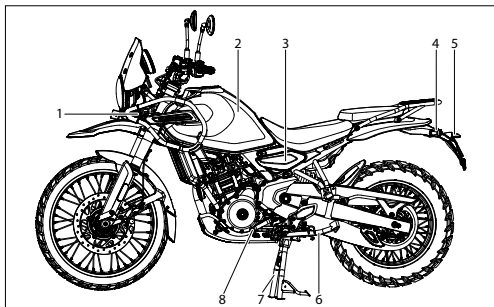
1. High/Low beam/Flashing switch
2. Turn signal switch
3. Instrument cluster
4. Mode switch
5. Ignition/Engine kill switch
6. Hazard switch
7. USB charger port
8. Fuel tank cap
9. Joystick
10. Horn switch
11. Home button

LOCATION OF KEY PARTS



1. Right trafficator rear
2. Pillion seat
3. Rider seat
4. Right side panel
5. Head lamp
6. Right trafficator front
7. Horn
8. Rear brake pedal
9. Oil level window

LOCATION OF KEY PARTS



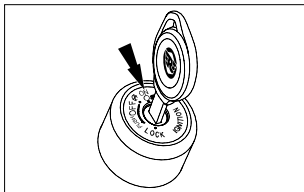
1. Left trafficator front
2. Fuel tank
3. Left side panel
4. Left trafficator rear
5. License plate illuminator
6. Side stand
7. Center stand
8. Gear change lever

OPERATION OF CONTROLS

IGNITION KEY

⊗ "OFF"

○ "ON"



NOTE

- Key can be removed only if ignition is in OFF or steering is locked.

- Key is common for ignition, fuel tank lock, steering lock and pillion seat.
- Key can be removed from fuel tank and pillion seat only in locked position from the key slots.



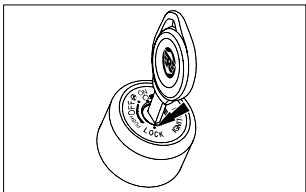
WARNING

- Do not switch OFF ignition while riding the motorcycle.
- Doing so can cause a potential accident, resulting in serious injury to both rider and other road users, besides causing severe damage to the motorcycle.

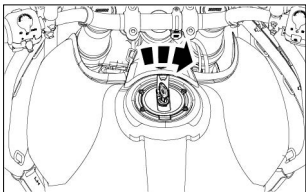
STEERING LOCK

- Turn the handle bar to extreme left position.
- Push the key inside at OFF position, press and further turn to anticlockwise direction to lock the steering system.
- Turn the key in the clockwise direction to unlock the steering.

OPERATION OF CONTROLS



FUEL TANK CAP



- Lift key flap on fuel tank cap and insert key.

- Turn key clockwise to open.
- Press cap to lock with key in position.
- Remove key from cap and close flap.



WARNING

- Do not overfill the fuel tank.
- Fill fuel only till the bottom of anti splash plate.
- Over filling may result in gasoline entering the EVAP canister and may damage the evaporative emission system.

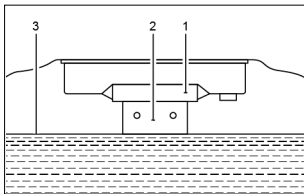
CAUTION

- Gasoline vapour is highly explosive. Please ensure there are no open flames or sparks nearby while refueling and fill fuel only in a well ventilated area.
- Please ensure gasoline does not spill on painted surfaces. In case fuel spills over the painted surfaces wipe it off immediately as it may leave a permanent stain.
- Do not smoke while refueling or when fuel tank cap is open.

OPERATION OF CONTROLS

FUEL FILLING LEVEL

1. Fuel filler collar
2. Anti splash plate
3. Maximum fuel level



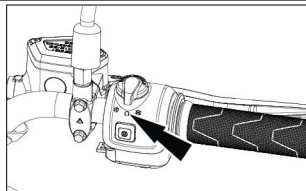
IGNITION/ENGINE KILL SWITCH



"OFF"



"ON"



CAUTION

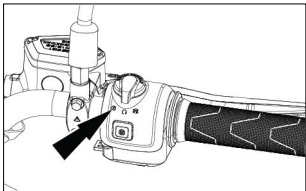
- Turn OFF ignition switch when engine is not running. Failure to do so will discharge the battery due to the headlamp being continuously ON.

E-START SWITCH



- Push and hold electric start switch until engine starts for a maximum of 5 seconds.

OPERATION OF CONTROLS



CAUTION

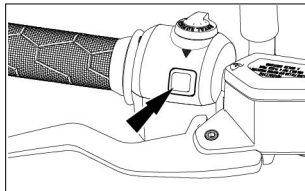
- In case of prolonged stoppage of vehicle, please turn off ignition key to avoid discharge of battery.

HAZARD LIGHT SWITCH

- Press the hazard button to hazard blinking ON.

CAUTION

- Hazard flashing will create a strain on battery. Do not use hazard warning for longer period unless necessary.



Methods to activate hazard flasher:

- Ignition switch ON, press the hazard switch. Hazard will work unless manual deactivation (OFF).
- Ignition switch ON, press the hazard switch hazard will start working - Ignition switch OFF
 - Hazard will keep working for a duration of 30 minutes
 - Unless manual deactivation (OFF).
- Hazard flasher cannot be activated in ignition switch OFF condition.

OPERATION OF CONTROLS



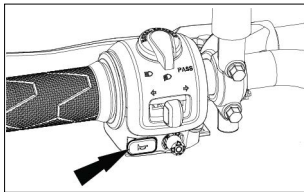
WARNING

- Turn signals do not work when the hazard light switch is "ON".
- All the trafficator lamps will flash simultaneously.

HORN

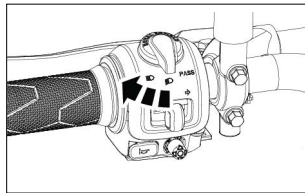


Press the horn button to sound horn.



HIGH BEAM/LOW BEAM SWITCH

- When the headlamp is in "ON" condition High / Low beam will be selected by toggling the switch. High beam indicator tell tale located in instrument cluster will glow when high beam is selected.

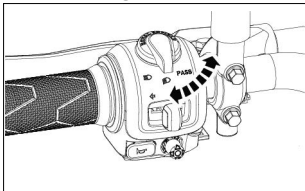


- High beam
- ▨ Low beam

OPERATION OF CONTROLS

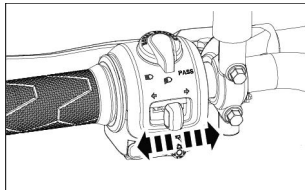
FLASH SWITCH

Push the switch for headlight flash.



TURN SIGNAL SWITCH

- ← Left turn signal "ON"
- ↑ "OFF" (Push to cancel)
- ⇒ Right turn signal "ON"

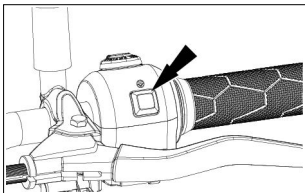


Push the button from OFF position to either left or right before turning as needed. To cancel the turn signal lights, push the switch in after it has returned to the center position.

OPERATION OF CONTROLS

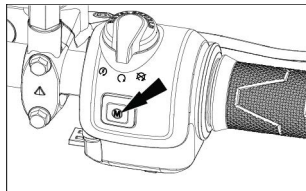
HOME BUTTON

Home button on left side switch cube, it's used to go back option.



MODE BUTTON

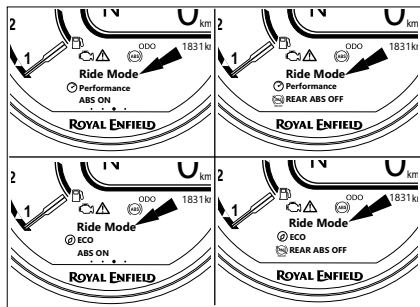
Mode button on right side switch cube, it's used to change the riding modes.



RIDING MODE

- The ride mode can be viewed and changed by pressing the mode button on the RH switch cube.
- The ride mode appears on the home screen and following modes are available.
 - ★ Performance + ABS ON
 - ★ Performance + Rear ABS OFF
 - ★ ECO + ABS ON
 - ★ ECO + Rear ABS OFF

OPERATION OF CONTROLS



NOTE

- To change the mode from performance + ABS ON to performance + Rear ABS OFF in static condition, press the MODE button two times, the display shows perfor-

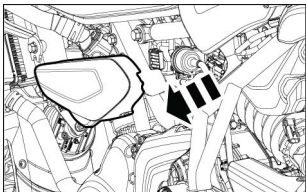
mance + Rear ABS OFF and leave the screen for a few seconds the mode changes.

- Likewise we can change the modes to ECO + ABS ON and ECO + Rear ABS OFF.
- In dynamic condition we can change the mode only from performance to ECO and ECO to performance with ABS ON, to change the mode in dynamic condition some of the conditions to be meet.
 - ★ Throttle to be closed
 - ★ Clutch should be pressed or vehicle to be in Neutral gear
- If the above said condition are not met cluster will not allow to change the mode and it will deny the mode with note in cluster home screen.
- ABS ON to OFF is not allowed in dynamic condition considering the safety by norms, but at the same time we can able to change the ABS mode from ABS OFF to ABS ON.

OPERATION OF CONTROLS

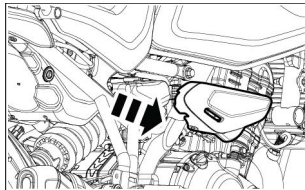
SIDE PANEL LEFT

- To access the left side panel loosen and remove the Allen bolt by using 4 mm Allen key available in the tool kit.



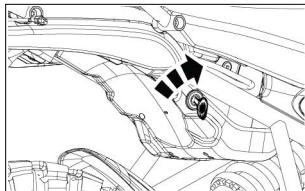
SIDE PANEL RIGHT

- To access the right side panel loosen and remove the Allen bolt by using 4 mm Allen key available in the tool kit.



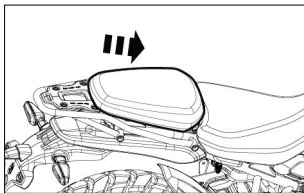
PILLION AND RIDER SEAT DISMANTLING

- Insert the key on the pillion seat key slot and turn clockwise direction.

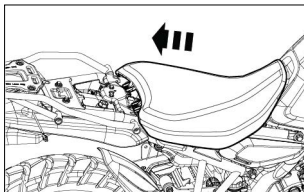


OPERATION OF CONTROLS

- Slide the seat towards forward direction to remove the pillion seat.



- Then slide the rider seat backward direction to remove the rider seat.

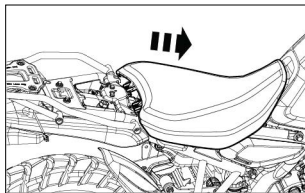


NOTE

- The rider seat height adjustment option is available in the bottom side of the rider seat, if increase or decrease in the rider seat height just change the front and rear end seat rod slot.
- Place the removed seat in a safe location to prevent from scratches and dirt.

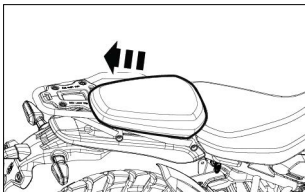
PILLION AND RIDER SEAT ASSEMBLY

- Slide the seat forward direction and ensure the rider seat aligned with frame.

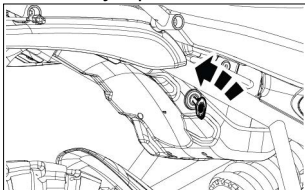


OPERATION OF CONTROLS

- Place the pillion seat and slide the seat towards backward direction.

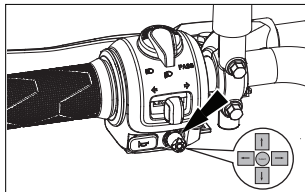


- Ensure the pillion seat aligned with frame and press seat to lock with key in position.



JOYSTICK

- Joystick is used for navigating up, down, left and right direction and to select also.



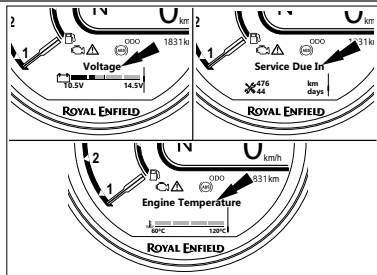
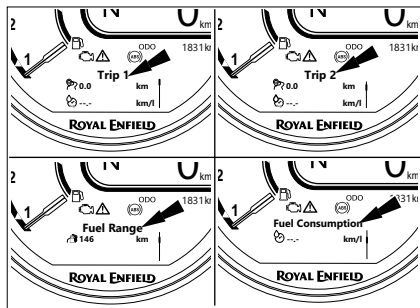
IF PRESS JOYSTICK LEFT

- The following details are displayed on the advanced dashboard.
 - ★ Trip 1
 - ★ Trip 2
 - ★ Fuel range
 - ★ Instantaneous fuel consumption

OPERATION OF CONTROLS

- ★ Battery gauge
 - ★ Service Due In
 - ★ Engine temperature
- The above details can be customized in my vehicle option available in the settings menu.

For Analog Screen



- Press the joystick right from the first detail to go back to the home screen.
- The home screen can be switched only from the first option in the advanced dashboard.

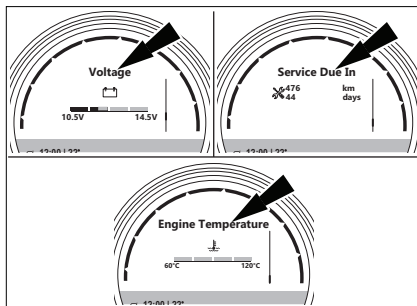
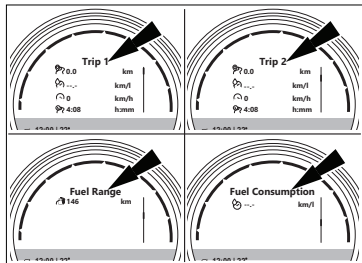
NOTE

- We have four segments in battery gauge as shown and each segments carries 1V.

OPERATION OF CONTROLS

- Example: If 2 segments are filled completely battery voltage is 12.5 V, if upto 3 segments half filled it denotes as 13 V.
- Likewise we have four segments in temperature gauge as shown and each segments carries 15°C.
- Example: If 2 segments are filled completely gauge denotes as 90°C, if upto 3 segments half filled it denotes as 98°C (approximately).

For Digital Screen



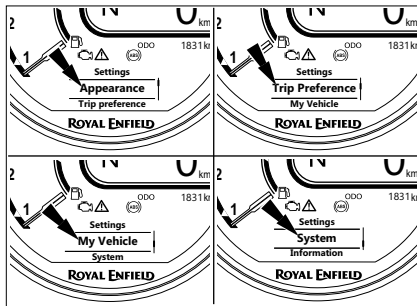
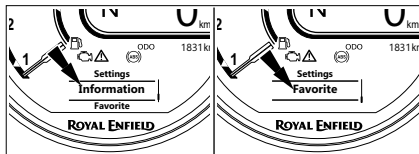
Distance to empty

- Distance to empty is a feature which shows how much distance the vehicle can run while in reserve tank/low fuel indicator starts glowing.
- This will start showing in the cluster when fuel gauge shows low fuel indicator.

OPERATION OF CONTROLS

IF PRESS JOYSTICK UP

- The following settings options are available.
 1. Appearance
 2. Trip preference
 3. My vehicle
 4. System
 5. Information
 6. Favorite Apps
- Press the home button on the LH switch cube to go back.



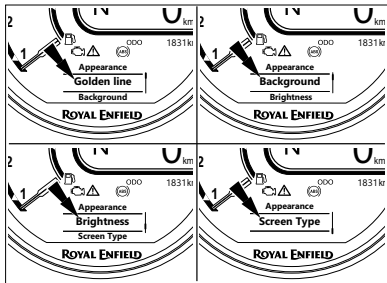
1. APPEARANCE

- From the settings menu center press the joystick with the appearance selected to explore the options.
- The following options will appear on the screen.

OPERATION OF CONTROLS

- i. Golden line
- ii. Background
- iii. Brightness
- iv. Screen type

- The options shall be navigated by joystick up & down press and selected by joystick center press.

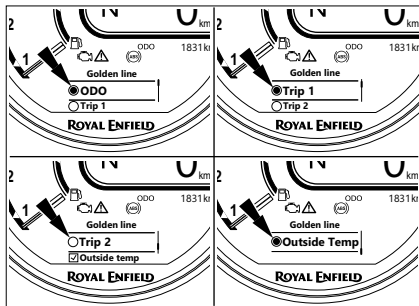


- Press the home button on the LH switch cube to go back.

i. Golden line

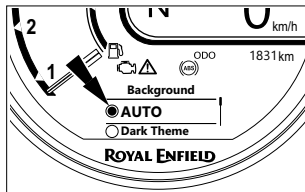
- Center press the joystick with the golden line option selected will open the details to show adjacent to the golden line on the TFT screen.
- The following options will be shown on the display.
 - ★ ODO
 - ★ Trip 1
 - ★ Trip 2
 - ★ Outside temperature
- The options shall be navigated by the use of joystick up & down press and selected by the use of joystick center press.
- Press the home button on the LH switch cube to go back.

OPERATION OF CONTROLS



ii. Background

- Center press the joystick with the background option selected to change the background theme of the instrument cluster.
- There are two options available: Auto and dark theme.



- The options shall be navigated by joystick up & down press and selected by joystick center press.
- Press the home button on the LH switch cube to go back.

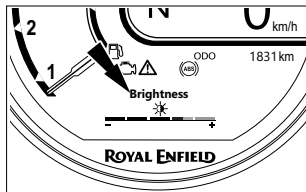
NOTE

Default it is in auto theme (day time - light theme & night time - dark theme).
The dark theme shall be applicable to both Analog and Digital screen type.

OPERATION OF CONTROLS

iii. Brightness

- Center press the joystick with the brightness option selected to change the brightness of the instrument cluster.
- The brightness shall be increased by joystick right press and decreased by joystick left press.
- Press the home button on the LH switch cube to go back.



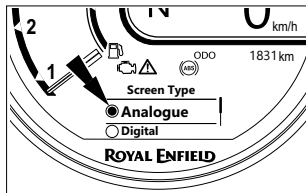
NOTE

Brightness can be adjusted only in the dark theme.

iv. Screen type

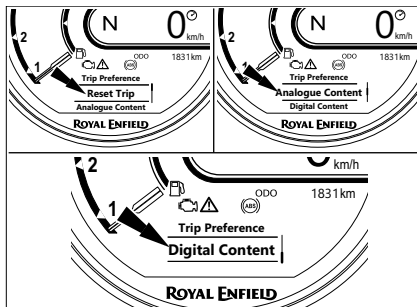
- Center press the joystick with the screen type option selected to change the screen type of the instrument cluster.
- There are two options available: Analog and digital screen.
- Default the screen is in analog type.
- The options can be navigated by joystick up and down press and selected by joystick center press.
- Press the home button on the LH switch cube to go back.
- Screen can be changed from analog to digital by long pressing the Mode button on the RH switch cube.

OPERATION OF CONTROLS



2. TRIP PREFERENCE

- From the settings menu center press the joystick with the trip preference selected to explore the options.
- The following options are available in trip preference menu.
 - i. Reset trip
 - ii. Analogue content
 - iii. Digital content

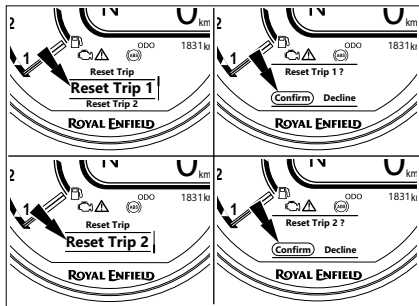


- The options shall be navigated by joystick up and down press and selected by joystick center press.
- Press the home button on the LH switch cube to go back.

OPERATION OF CONTROLS

i. Reset trip

- Center press the joystick with the reset trip option selected to reset the trip.
- There are two options available: Reset trip 1 and reset trip 2.



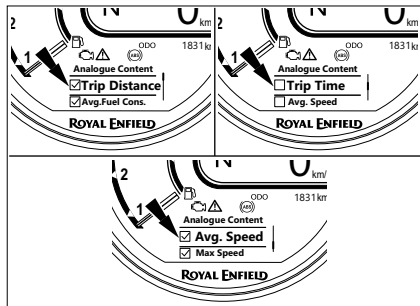
- The options can be navigated by joystick up and down press and selected by joystick center press.
- Selecting either reset trip 1 or reset trip 2 will show a confirmation popup for reset.
- Press the home button on the LH switch cube to go back.

ii. Analogue content

- Center press the joystick with the analogue content option selected to explore the options.
- The following options are available.
 - ★ Trip distance
 - ★ Average fuel consumption
 - ★ Trip time
 - ★ Average speed
 - ★ Max speed

OPERATION OF CONTROLS

- The options can be navigated by joystick up and down press and selected by joystick center press.
- Any two of the above options will be shown in the analogue screen.



- Press the home button on the LH switch cube to go back.

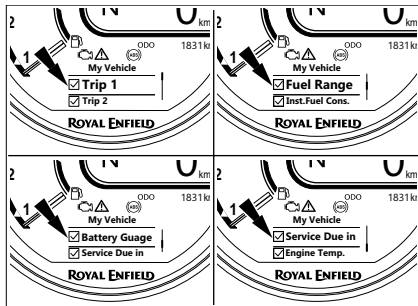
iii. Digital content

- Center press the joystick with the digital content option selected to explore the options.
- The following options are available.
 - ★ Trip distance
 - ★ Average fuel consumption
 - ★ Trip time
 - ★ Average speed
 - ★ Max speed
- The options can be navigated by joystick up and down press and selected by joystick center press.
- Any four of the above options will be shown in the digital screen.
- Press the home button on the LH switch cube to go back.

OPERATION OF CONTROLS

3. MY VEHICLE

- From the settings menu center press the joystick with the my vehicle option selected to explore the options.
- The following options are available in my vehicle menu.
 - ★ Trip 1
 - ★ Trip 2
 - ★ Fuel range
 - ★ Instantaneous fuel consumption
 - ★ Battery gauge
 - ★ Service Due In
 - ★ Engine temperature
- The content to be shown in the advanced dashboard can be customized based on rider preference in my vehicle menu.

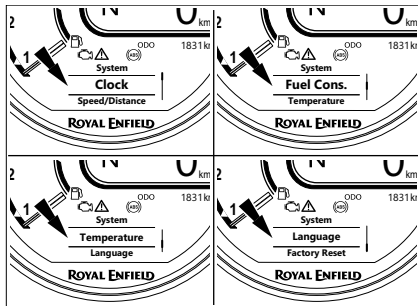


- The options can be navigated by joystick up and down press and selected by joystick center press.
- Press the home button on the LH switch cube to go back.

OPERATION OF CONTROLS

4. SYSTEM

- From the settings menu center press the joystick with the my vehicle option selected to explore the options.
- The following options are available in the system menu.
 - i. Clock
 - ii. Speed/Distance
 - iii. Fuel consumption
 - iv. Temperature
 - v. Language
 - vi. Factory reset
- The options can be navigated by joystick up and down press and selected by joystick center press.
- Press the home button on the LH switch cube to go back.

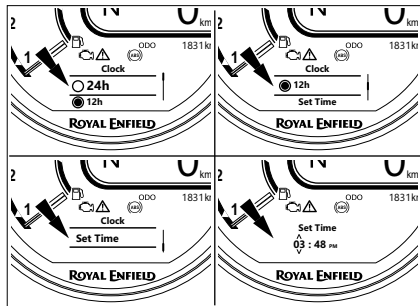


i. Clock

- Center press the joystick with the clock option selected to explore the options.
- The following options are available in the clock menu.
 - ★ 24H

OPERATION OF CONTROLS

- ★ 12H
- ★ Set time



- The options can be navigated by joystick up and down press and selected by joystick center press.

- Press the home button on the LH switch cube to go back.

NOTE

If the mobile phone is connected to the vehicle only the hour format (i.e. 24H & 12H) can be selected based on the rider preference.

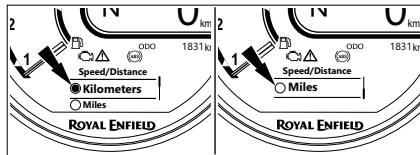
If the mobile phone is not connected to the vehicle all the options (i.e. 24H, 12H & Set Time) are selected.

- In the set time option, time can be adjusted by joystick up, down, left & right press.
- Joystick up & down press is used to increase or decrease the hour, minute & time format values, while joystick left & right is used to switch between hour, minute & time format selection.

OPERATION OF CONTROLS

ii. Speed/Distance:

- Center press the joystick with the speed/distance option selected to explore the options.
- The following options are available in the menu.
 - ★ Kilometers
 - ★ Miles
- The options can be navigated by joystick up and down press and selected by joystick center press.
- Press the home button on the LH switch cube to go back.



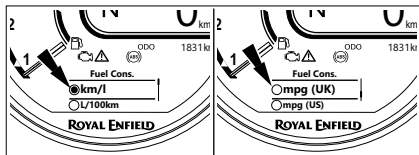
iii. Fuel consumption

- Center press the joystick with the fuel consumption option selected to explore the options.
- The following options are available in the menu.
 - ★ km/l
 - ★ L/100 km
 - ★ mpg (UK)
 - ★ mpg (US)
- The options can be navigated by joystick up and down press and selected by joystick center press.
- Press the home button on the LH switch cube to go back.

NOTE

If the speed/distance is in km then either km/l or L/100 km options are available to select and the remaining options are grayed out.

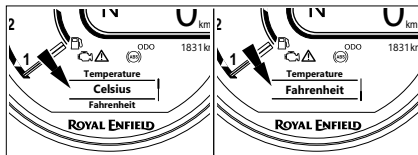
OPERATION OF CONTROLS



If the speed/distance is not in km (in mpg) then either mpg (UK) or mpg (US) options are available to select and the remaining options are grayed out.

iv. Temperature

- Center press the joystick with the temperature option selected to explore the options.
- The following options are available in the menu.
 - ★ Celsius
 - ★ Fahrenheit
- The options can be navigated by joystick up and down press and selected by joystick center press.



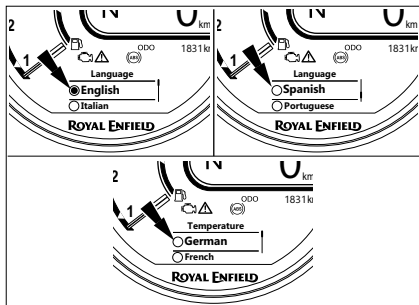
- Press the home button on the LH switch cube to go back.

v. Language

- Center press the joystick with the language option selected to explore the options.
- The following options are available in the menu.
 - ★ English
 - ★ Italian
 - ★ Spanish
 - ★ Portuguese

OPERATION OF CONTROLS

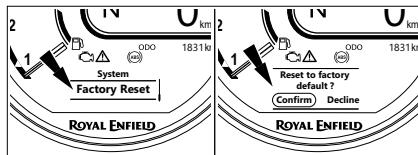
- ★ German
- ★ French
- The options can be navigated by joystick up and down press and selected by joystick center press.



- Press the home button on the LH switch cube to go back.

vi. Factory reset

- Center press the joystick with the factory reset option selected to reset all settings.
- A confirmation popup will appear on the display.



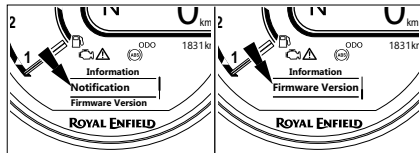
- Press the home button on the LH switch cube to go back.

5. INFORMATION

- From the settings menu center press the joystick with the information option selected to explore the options.

OPERATION OF CONTROLS

- The following options are available in the system menu.
 - i. Notification
 - ii. Firmware version
- The options can be navigated by joystick up and down press and selected by joystick center press.

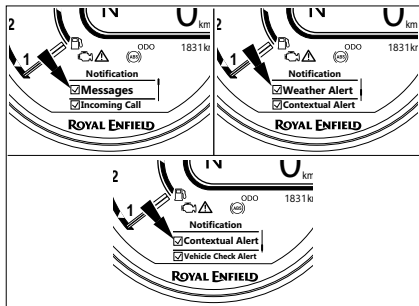


- Press the home button on the LH switch cube to go back.

i. Notification

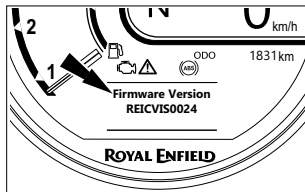
- Center press the joystick with the notification option selected to explore the options.
- The following options are available in the menu.
 - ★ Messages
 - ★ Incoming call
 - ★ Weather alerts
 - ★ Contextual alert
 - ★ Vehicle check alert
- The options can be navigated by joystick up and down press and selected by joystick center press.
- Press the home button on the LH switch cube to go back.

OPERATION OF CONTROLS



ii. Firmware version

- Center press the joystick with the firmware version option selected to view the current firmware version of the instrument cluster.
- Press the home button on the LH switch cube to go back.



6. FAVORITES

- From the settings menu center press the joystick with the favorite apps option selected to explore the options.
- The following options are available in the system menu.
 - Navigation
 - Music
 - Android call or phone

OPERATION OF CONTROLS

iv. Android message

v. Compass

- The options can be navigated by joystick up and down press and selected by joystick center press.
- Press the home button on the LH switch cube to go back
- Scan the QR Code, to download, Install, register and to know more about the TFT cluster mobile connectivity information.



Smartphones compatible version to use RE Mobile app:

- Android: Our app's minimum supported version will be two versions behind the current Android OS.
- iOS: The minimum supported iOS version will be one version behind the current iOS release.

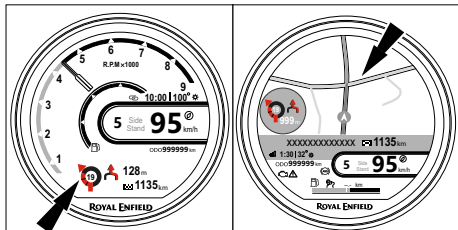
NOTE

- If mobile phone connectivity is disabled from the vehicle, the favorite function will also get disabled.
- Huawei phones are not compatible with our app; we do not offer support for them.

OPERATION OF CONTROLS

i. Navigation

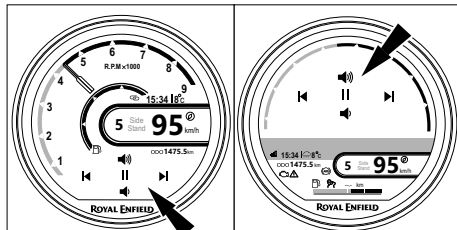
- Center press the joystick with the navigation option selected to explore the options.
- The options can be navigated by joystick up and down press and selected by joystick center press.



- Press the home button on the LH switch cube to go back.

ii. Music

- Center press the joystick with the music option selected to explore the options.
- The options can be navigated by joystick up and down press and selected by joystick center press.



- Press the home button on the LH switch cube to go back.

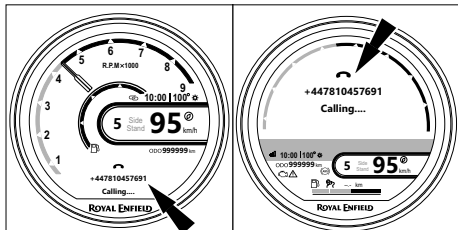
NOTE

For iOS, Apple music alone will work.

OPERATION OF CONTROLS

iii. Android Call or Phone

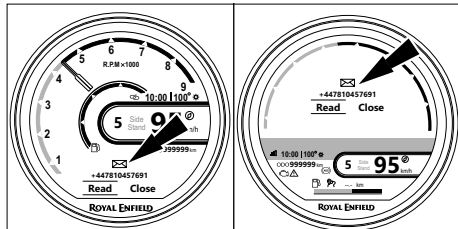
- Center press the joystick with the phone option selected to explore the options.
- The options can be navigated by joystick up and down press and selected by joystick center press.



- Press the home button on the LH switch cube to go back.

iv. Android Message

- Center press the joystick with the message option selected to explore the options.
- The options can be navigated by joystick up and down press and selected by joystick center press.



- Press the home button on the LH switch cube to go back.

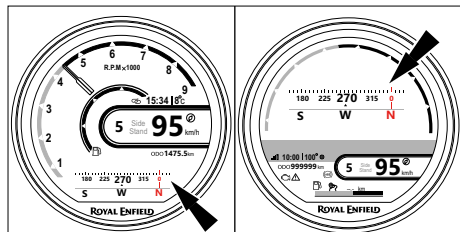
NOTE

For iOS, call and message will not be supported.

OPERATION OF CONTROLS

v. Compass

- Center press the joystick with the compass option selected to explore the options.
- The options can be navigated by joystick up and down press and selected by joystick center press.



- Press the home button on the LH switch cube to go back.

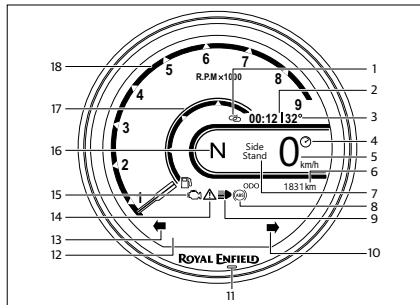
NOTE

Compass will function, only when there is active navigation.

OPERATION OF CONTROLS

INSTRUMENT CLUSTER

For Analog Type

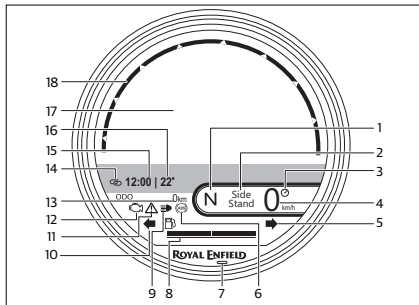


1. Mobile connectivity symbol
2. Real time clock (RTC)
3. Outside air temperature

4. Ride mode
5. Speed indicator (km/miles can be selected based on country)
6. Odometer (km/miles can be selected based on country)
7. Side stand indicator
8. ABS warning lamp
9. High beam indicator
10. Right turn indicator
11. Ambient sensor
12. Home screen
13. Left turn indicator
14. General warning symbol
15. Engine MIL
16. Gear indication
17. Fuel bar gauge
18. Engine RPM gauge

OPERATION OF CONTROLS

For Digital Type



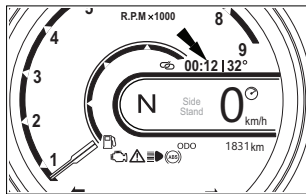
1. Gear indication
2. Side stand indicator
3. Ride mode

4. Speed indicator (km/miles can be selected based on country)
5. Right turn indicator
6. ABS warning lamp
7. Ambient sensor
8. Fuel bar gauge
9. High beam indicator
10. Right turn indicator
11. General warning symbol
12. Engine MIL
13. Odometer (km/miles can be selected based on country)
14. Mobile connectivity symbol
15. Real time clock (RTC)
16. Outside air temperature
17. Home screen
18. Engine RPM gauge

OPERATION OF CONTROLS

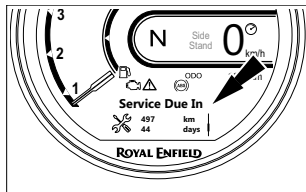
CLOCK

- Display in 24 hours format type.
- Will reset to 00:00 when battery is disconnected.



SERVICE REMINDER

- In case of service reminder symbol is ON. Please plan for scheduled service at an authorised service center.
- Service reminder can be reset only by authorised personnel at service centre after service is completed.

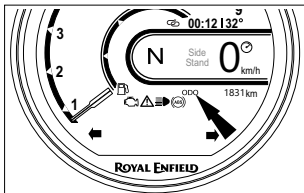


- Service reminder symbol will flash on as per below distance input from odometer.
 - 1st service - 450 km or 279.6 miles
 - 2nd service - 9,900 km or 6151.5 miles
 - From there on for every 10,000 km or 6213.7 miles from previous value (ex: 19,900 km or 12365.2 miles, 29,900 km or 18578.9 miles etc.)

OPERATION OF CONTROLS

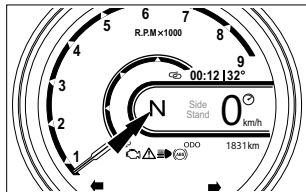
ODOMETER

- Displays the cumulative kilometers the vehicle has covered.

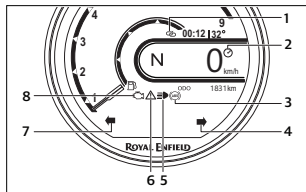


GEAR POSITION INDICATION

- Displays the gear position in which the vehicle is traveling.
- When in neutral the indication will be "N".
- When in gear the appropriate number between 1 to 6 will be displayed.



TELL TALES



OPERATION OF CONTROLS

- **(1) Mobile connectivity symbol** - It's shows mobile connecting and disconnecting indication.
- **(2) Ride mode** - It can be viewed both performance mode and ECO mode indication based on the vehicle riding condition.
- **(3) ABS** - Will be continuously ON during initial check up (until or after vehicle running for a particular distance / speed) and will turn OFF if system is ok, then will light up again in case of any ABS system malfunction.
- **(4) Turn right** - Right turn signal ON.
- **(5) High beam indication** - Head lamp high beam ON.
- **(6) Warning symbol** - This indicator glows whenever the vehicle components fault.
- **(7) Turn left** - Left turn signal ON.
- **(8) Engine MIL** - Will be continuously ON in case of EMS malfunction.

NOTE

- Tell tales lights will switch "OFF" after engine is started.

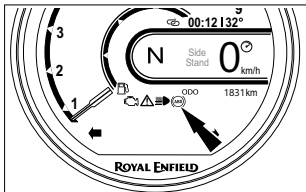
CAUTION

- Do not run motorcycle in case the malfunction remains "ON" continuously as it can cause severe damage to the ECU & Sensors. Please visit the nearest authorised Royal Enfield dealer to diagnose & rectify the defect in the EMS.
- Do not run motorcycle in case the ABS indicator lamp continuously "ON".

OPERATION OF CONTROLS

ABS INDICATOR LAMP

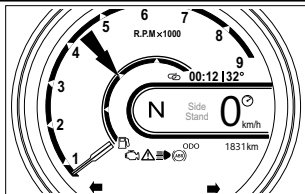
- When the ignition and engine kill switch are switched in "ON" position the ABS sign will glow and remain "ON" till the motorcycle attains a speed of 5 km/h (3.1 mph) and turns "OFF". If light up again in case of any ABS system malfunction.



CAUTION

- Do not run motorcycle in case the ABS indicator lamp is "ON" continuously above 5 km/h (3.1 mph).

FUEL GAUGE



- Digital with 4 segment bar graph.
- Last segment blinking along with low fuel tell tale "ON" for low fuel condition.



WARNING

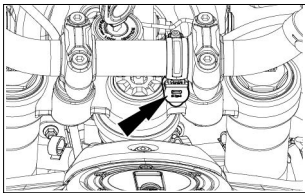
- Do not use the motorcycle for long duration with the fuel indication in last segment blinking. Refuel at the earliest.

OPERATION OF CONTROLS

- Failure to do so will cause the motorcycle to run out of fuel and get stranded in addition to causing serious damage to the fuel pump.

CHARGER PORT

- Charger port is located on the center part of handle bar.



WARNING

- Recommended not to use in rainy conditions to avoid damages to smart phones and charger, RE shall not be liable for any damage to smart phones.
- Do not use any other device other than mobile phones, only one mobile shall be charged at one point of time.
- Ensure proper insertion of USB cable, damages due to hard / wrong insertion of cable will not be entertained in warranty.
- Do not leave the USB port cap opened / closed partially to avoid any short circuit when not in use.
- Do not insert any metal or conductive materials inside USB charging port which may lead to short circuit.

OPERATION OF CONTROLS

NOTE

- Charging port is provided only for charging purpose and no data transfer is enabled.
- Only constant charging mode is provided, fast / dash charging mode is not provided to be compatible with multiple makes mobile phones and cannot be compared with the performance of original smartphone chargers.
- Duration of charging can be higher and will vary for different make mobile phones depending on smart phone battery capacity, SOC and smart phone charging circuits.

CAUTION

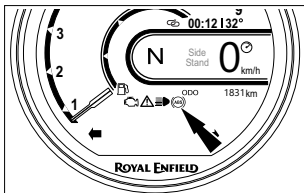
- Customer to ensure USB port cap is closed and locked properly when not in use, warranty will not be provided if port cap is damaged and not sealed properly.

- If high current draw greater than 2.5 A is observed USB charger will shutdown please check your smart phone battery current ratings before using.
- USB charger will function only when engine is in running condition.
- Use standard approved and high quality USB cables for proper functioning.

WARNING INDICATIONS AND SAFETY SYSTEMS

ANTI-LOCK BRAKING SYSTEM (ABS)

- Anti-lock braking system (ABS) will help prevent the brakes from locking the wheels, during sudden application of the brakes at high speeds or at low friction surfaces. This will help the rider to have better traction and control over the motorcycle and prevent the motorcycle from skidding which can cause an accident.



- In the event of a sudden and hard application of the brakes by the rider, the sensors in the braking system

will signal the ABS modulator to momentarily and continuously reduce the hydraulic pressure and thereby prevent the brakes from locking the wheels while reducing the speed of the vehicle. This will help the rider to control the motorcycle.

- An ABS indicator lamp is provided in the cluster (as shown in the adjacent image) to warn the rider in the event of any malfunction of the ABS.
- When the ignition and engine kill switch are switched in "ON" position the ABS sign will glow and remain "ON" till the motorcycle attains a speed of 5 kmph and turns "OFF". This indicates the ABS is functioning properly. If the ABS indicator lamp does not switch "OFF" and remains continuously "ON" at higher speeds, it is recommended not to drive the ABS motorcycle. Get the brake system inspected and corrected through a nearest Authorised Royal Enfield Service Centre. Failure to do so can result in a serious injuries and loss of life.

WARNING INDICATIONS AND SAFETY SYSTEMS

CAUTION

- ABS is a safety feature to help prevent locking of wheels during panic application of brakes. It is by no means a substitute for good riding practices and anticipatory braking.
- Please ride carefully and apply brakes cautiously, especially while cornering. ABS cannot estimate the "weight shifts" and momentum of the motorcycle while negotiating a corner and therefore prevent skidding due to loss of traction.
- Please anticipate the stopping distance required for the speed of travel and apply brakes well in advance so as to bring the motorcycle to a safe stop.
- Ensure instrument cluster is in proper functioning as it is an integral part of ABS system.

- Please apply both brakes simultaneously to stop with better traction and control of the motorcycle.
- Failure to adhere to the above can cause an accident resulting in serious injuries and loss of life.



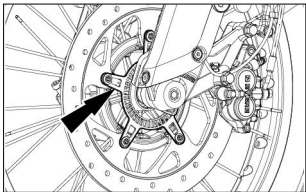
WARNING

- Always use the approved front / rear tyres and rear sprocket by Royal Enfield to ensure correct ABS operation.
- Do not make any changes to the suspension travel.
- Only use recommended spare parts on the brake system which have been approved by Royal Enfield.
- ABS does not reduce braking distance. In certain circumstances, ABS may result in a longer stopping distance.

WARNING INDICATIONS AND SAFETY SYSTEMS

CAUTION

- Visually inspect for damaged teeth on the front and rear ABS toner rings.



- Inspect for damages and dents on the face of the teeth.
- The teeth edges should be consistent in appearance. In case if a toner ring is found to be damaged or bent, it is recommended to visit nearest dealership for necessary action.

- Inspect for debris at the end of the wheel speed sensors - front & rear, if contamination is observed, it is recommended to clear it suitably or you may visit to nearest dealership for necessary action.

ROLL OVER SENSOR

In the event of motorcycle falling over in either of its sides with the engine running and the gears engaged the roll over sensor will disable fuel systems and switch OFF the engine. This is to prevent any damage to the motorcycle and its rider.

To reset the roll over sensor and reactivate the fuel systems.

- Ensure the motorcycle is made upright and is on its center stand.
- Ensure gears are in correct neutral and the neutral lamp is glowing in the instrument console.
- Switch OFF both ignition & stop switches, wait for a few seconds and switch ON the ignition and stop switch again, to start the engine.

WARNING INDICATIONS AND SAFETY SYSTEMS

DO'S AND DON'TS: (ABS)

DO'S	DONT'S
<ul style="list-style-type: none">■ While starting the engine do check the ABS indicator glows ON and turns OFF when the vehicle speed exceeds 5 km/h (3.1 mph).■ Please check the brake fluid level in the front and rear brake reservoir and ensure there is no leak in the brake systems.■ Apply both the brakes simultaneously for better efficiency.■ In the event of the ABS indicator remaining continuously ON, please take the motorcycle to a nearest Authorised Royal Enfield Service Centre to inspect the brake system.	<ul style="list-style-type: none">■ Do not release the brake lever / pedal when pulsations are felt during hard application of the brakes in an emergency situation. The pulsations only indicate that the ABS is activated.■ Do not apply only the front or rear brake as it can lead to inefficient braking.

PRE-OPERATIONAL CHECKS

A careful check of the following must be carried out every time before riding and specially after long periods of storage to determine if any additional maintenance is necessary.

1. Adequate fuel in the tank for the journey planned.
2. Tyre for correct pressure, abrasions or cuts.
3. Ensure chain for proper tension and sufficient lubrication.
4. Brakes, clutch, steering and throttle for proper responsiveness.
5. Smooth operation and free play in front and rear brake levers.
6. Engine oil and coolant level.
7. Headlamp, tail lamp, brake lamp and indicator lamps for proper functioning.
8. Proper functioning of all the warning lamps in the instrument cluster.

9. Brake fluid level is above the "MIN" mark in the master cylinder.
10. Ensure the clutch free play and clutch function.



WARNING

For your personal welfare and safety, all the points mentioned above should be performed periodically. Failure to do so may affect safe operation, damage your motorcycle and could result in an accident causing serious injury or loss of life.

RUNNING IN PERIOD

The Royal Enfield motorcycle as you would be experiencing is capable of consistent high speeds. However as with any new motorcycle, a "RUNNING-IN PERIOD" procedure is essential to help in proper "Bedding-in" of the various moving parts in your motorcycle and to achieve optimum performance like gear shifting subsequently.

1. Do not exceed maximum specified pay load.
2. Warm up the engine for a few minutes at idling speed to allow engine oil to lubricate all the moving parts in the engine before riding the motorcycle.
3. Avoid full throttle operation and do not ride at constant throttle continuously. Vary the speed by 10% while riding.
4. Ride at proper speed and avoid sudden accelerations and braking.
5. Avoid riding motorcycle continuously for over an hour, it is recommended to take brief stop.

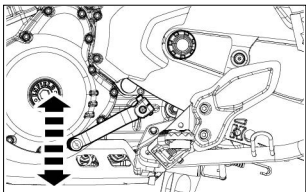
NOTE

The below table indicates the recommended engine speed in rpm for optimum performance of the engine.

Distance Covered	Max. Engine Speed
0 to 500 km (0 to 311 miles)	4000 rpm
501 to 2000 km (311 to 1243 miles)	6000 rpm

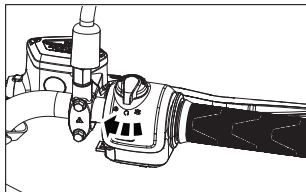
STARTING

- To shift into neutral, move the motorcycle back and forth gently, while simultaneously shifting the gear. Ensure gear is in neutral position and the neutral lamp is glowing in the instrument cluster.

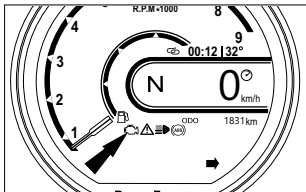


- Turn ignition key to ON position and engine kill switch on right hand side handle bar to run position.
- When both the ignition and engine kill switch is in "ON" position and after the vehicle is started, the MIL will glow for a few seconds and turns "OFF", this indicates

that all the function of the electronic fuel injection (EFI) system is functioning normally. In the event of any malfunction in the EFI system the MIL will glow continuously.



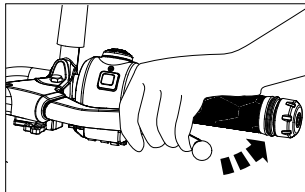
STARTING



CAUTION

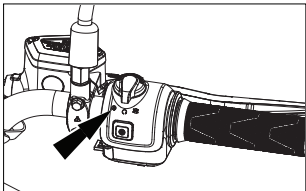
- In case the malfunction indicator does not turn OFF, get the motorcycle checked through an Royal Enfield Authorised Service Centre for rectification.
- Check the fuel level indicator in the cluster for adequate fuel in the fuel tank. In case the last bar is blinking continuously, it indicates low fuel level in the tank. Please re-fuel immediately.

- Disengage clutch by pulling in the clutch lever and hold it in depressed condition.



- Push and hold electric start switch until engine starts for a maximum of 5 seconds.

STARTING



NOTE

- In case the engine does not start within 5 seconds, release starter switch and wait for about 5 seconds before attempting to start the engine again.
- In case vehicle not starting on multiple continuous attempts, please turn OFF and turn ON ignition switch and then start again.

PRECAUTIONS

- Vehicle may start with side stand condition but engine will turn-off when gear is engaged, this side stand cut-off feature is provided for rider safety ensure side stand is retracted before vehicle moving / starting.

CAUTION

- If the engine does not start. Do not hold the starter switch in depressed condition for long periods, this will cause the battery to drain below the threshold level of 10 V. Please get the motorcycle checked through an Royal Enfield Authorised Service Centre to identify and correct the reason for not starting.

STARTING

- Never accelerate as soon as the engine starts, especially in cold condition. The engine should be allowed to run in idle rpm for at least 120 seconds for the engine oil to circulate and lubricate all the internal moving parts and for the engine temperature to raise. Failure to adhere to this important information will cause serious damage to the engine internals.
- Accelerate only after the idling rpm has stabilized and it is consistent.
- If the acceleration cable is damaged, should be replace the entire RH side module cube.



WARNING

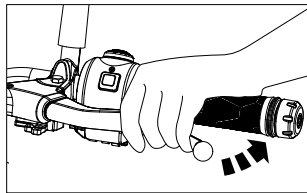
Please exercise extreme care while riding the motorcycle. Failure to do so can result in an accident causing injury to you or to other road users / passerby.

- Ensure gear in neutral position and the neutral lamp is glowing in the speedometer. To shift into neutral, move the motorcycle back and forth gently, while simultaneously shifting the gear.

CAUTION

Do not attempt to shift gears without moving the motorcycle back and forth as it will damage the gears mechanism.

- Depress and hold the clutch Lever.
- Press starter button and hold till engine starts. Do not release the button before engine starts.



- Do not press the starter button more than 5 seconds after three successive cranking, wait for 15 to 20 seconds the battery to recover.

GEAR SHIFTING, RIDING AND STOPPING

The clutch lever must be fully depressed before attempting a gear shift. Failure to fully depress the clutch lever will cause a rough start or stalling of the engine besides causing damage to transmission parts.

- When the vehicle is in neutral position, press gear shift lever down with toe to engage 1st gear.

GEAR SHIFT PATTERN

1 -- N -- 2 -- 3 -- 4 -- 5 -- 6

Half clutch usage pattern:

To maintain smooth control at low speed (<10 km/h), it is recommended to partially engage ('slip') the clutch while applying the throttle in order to prevent the engine from stalling. When holding the clutch in this partially engaged position, the motorcycle should be in 1st gear and at low engine RPM, in order to avoid excess wear or damage to the clutch components.

- Holding the clutch in a partially engaged position at lower speeds in 2nd gear or above will require higher engine RPM in order to prevent stalling as the clutch is released. This will increase clutch 'slip' and is likely to result in premature wear of clutch components.
- After shifting from one gear to another engage the clutch gradually (Not slowly).
- Wherever possible use the vehicle in clutch fully disengaged condition only with appropriate gears, which will give good clutch life.

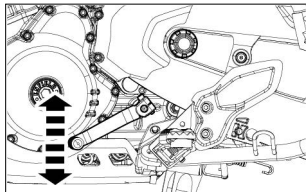
GEAR SHIFTING, RIDING AND STOPPING

Recommended up shift speed		
Gear change	km/h	mph
1 st - 2 nd	20	12.4
2 nd - 3 rd	30	19
3 rd - 4 th	40	25
4 th - 5 th	60	37.2
5 th - 6 th	75	47

Recommended down shift speed		
Gear change	km/h	mph
6 th - 5 th	70	43.4
5 th - 4 th	55	34.1
4 th - 3 rd	35	22
3 rd - 2 nd	25	16
2 nd - 1 st	18	11.1

CAUTION

- If the clutch lever is released abruptly and throttle opening is done insufficiently the motorcycle will have a rough start and cause the engine to stall.



- If the acceleration is very high and clutch lever is released abruptly, it will cause motorcycle to move suddenly, which will lead to loss of control leading to an accident resulting in injury and or loss of life to rider / other road users / passed by, besides damage to the motorcycle.

GEAR SHIFTING, RIDING AND STOPPING

- Always exercise utmost caution while releasing clutch and riding the motorcycle.
- Follow the recommended up shifting and down shifting speeds.

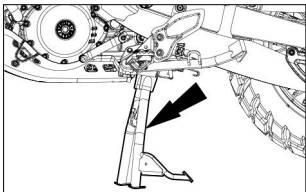
NOTE

- Always start motorcycle with the gear in neutral condition.
 - Always move the motorcycle in first gear position only.
 - When the engine speed decreases or while climbing a gradient or running at a reduced speed, shift to the appropriate lower gear to prevent the engine from stalling or straining to pull.
 - The clutch lever must be fully depressed, throttle modulated and immediately shifted to next gear as per recommended gear shifting speeds.
 - Failure to follow the above may cause a rough start or stalling or improper gear shifting of the engine besides causing damage to transmission parts.
- Always shift gears to neutral position just before bringing the vehicle to a complete stop.
 - Close throttle fully and release the clutch lever slowly ensuring the motorcycle is in neutral position and neutral lamp is glowing.
 - Stop the motorcycle in a safe place, turn OFF ignition and switch OFF engine kill switch.
 - While riding on steep slopes and descending long roads it is recommended to use the brake intermittently along with Engine braking in a combination way to achieve effective braking. Engine braking is achieved by performing downshifting of the gear from the current gear to slow down the vehicle.

PARKING

PARKING MOTOR CYCLE ON CENTER STAND

- Park the motorcycle in an upright position.
- Hold handle bar firmly in a straight position.
- Lower center stand, such that, both the legs of the stand are resting on a firm ground.

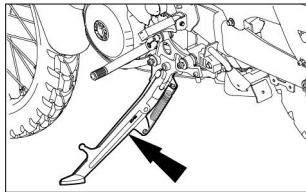


- Apply pressure on the fulcrum lever on the center stand and pull the motorcycle backward.

- Lock the steering and ensure the handle bar is locked firmly before removing the key from the ignition barrel.

PARKING MOTORCYCLE ON SIDE STAND

- Park the motorcycle in an upright position.
- Extend side stand. Tilt the motorcycle to the left side, till it is supported firmly on the ground.



PARKING

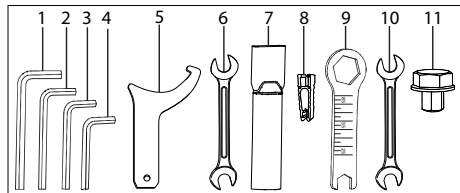


WARNING

- Ensure both stands are fully retracted before riding the motorcycle.
- Please exercise extreme care while parking and ensure it is parked on a firm and flat surface to avoid the motorcycle from falling over and causing injury to you or to others and damage to the motorcycle parts.
- The side stand is only designed for the weight of the motorcycle. Do not sit on the motorcycle when it is resting on the side stand. The side stand or frame may become damaged and the motorcycle may fall over.

TOOLS KIT

The tool kit is strapped underneath the pillion seat.



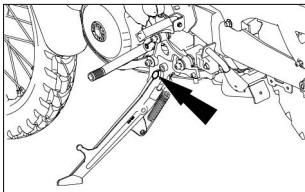
S.No	Description	Qty
1	Allen key 8 mm	1
2	Allen key 6 mm	1
3	Allen key 5 mm	1
4	Allen key 4 mm	1
5	C-Spanner	1
6	Double end spanner 10 x 13	1
7	Extension tube	1
8	Fuse puller	1
9	Ring spanner 24 x 14 combination	1
10	Double end spanner 12 x 16	2
11	Front spindle adapter	1

MINOR MAINTENANCE TIPS

The following simple maintenance activities will help in maintaining your motorcycle. However for an elaborate maintenance, we recommend you to get in touch with a Royal Enfield Authorised Dealer / Service centre.

HAND LEVERS, CENTER AND SIDE STAND PIVOTS

- Clean the pivot points and ensure they are free of any dirt, grime, rust, etc.
- Lubricate the pivots.

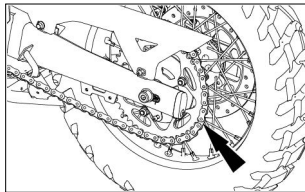


NOTE

Wipe off the excess lubricant to prevent dirt and grime from accumulating.

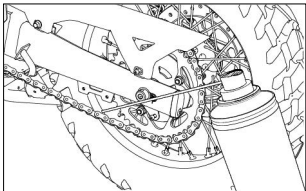
DRIVE CHAIN

- Spray drive chain with recommended chain cleaning solvent while simultaneously rotating rear wheel.



- Ensure the drive chain has been sufficiently and completely covered with the cleaning solvent. If necessary use a suitable brush to remove hard deposits from the chain.

MINOR MAINTENANCE TIPS

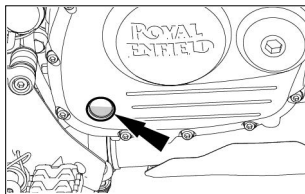


- Wait for a few minutes and clean the chain thoroughly from any dirt, grime, etc.
- Rotate rear wheel slowly and simultaneously apply recommended chain lubricant on the chain links.
- Wipe off excess chain lubricant after a few minutes with a clean cloth.

ENGINE OIL LEVEL CHECKING

- Place the vehicle on a level surface upright.
- Start the engine from cold condition, allow the engine to idle for 2 to 3 minutes and stop the engine.

- Wait 2 to 3 minutes to settle the oil and assess the sight glass. The volume added the minimum to maximum level is approximately 350 ml.
- Engine oil level should be close to "MAX" condition.



- If in case of oil level is not in above mentioned condition, then top-up the oil to "MAX" condition and repeat the procedure.
- Do not over fill above the "MAX" mark as it may affect the clutch function.

MINOR MAINTENANCE TIPS

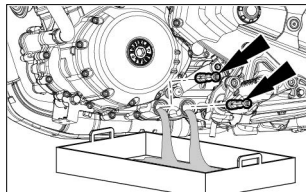
ENGINE OIL DRAINING/STRAINER CHECK

- Ensure vehicle is in straight position on ground level.
- Engine oil should always be drained when the engine is warmed up sufficiently so that the oil drains faster.
- Remove the sump guard and 2 plugs, then clean the 2 strainers.
- Check the condition of strainers, if strainers condition OK please reuse it.

NOTE

Do not reuse the O-rings, renew all O-rings.

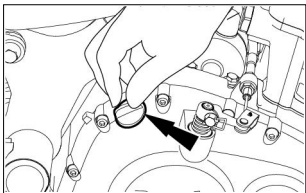
- Lubricate strainer and O-rings with engine oil.
- Push strainers fully into crankcases by hand before inserting the drain plugs.
- Lubricate plug O-rings with water based lubricant.
- Tighten torque of drain plugs to 13 ± 1 Nm.



OIL FILLING DURING OIL SERVICE

- Ensure vehicle is in straight position on ground level.
- Remove the filler cap both cap and O-ring.
- Add oil to the engine, fill until the oil level reaches the maximum mark on the sight glass.
- Install the filler cap. Start the engine from cold condition and run for 1-2 minutes.
- Switch off the engine and wait 1 minute.

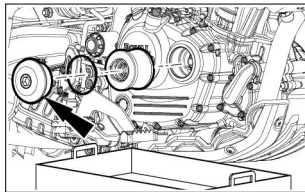
MINOR MAINTENANCE TIPS



- Check that the oil level is between the minimum and maximum lines on the sight glass.
- If not, top up the oil level so that it is between the minimum and maximum lines on the sight glass
- Refill the specified fresh engine oil quantity 2.1 L.

OIL FILTER REPLACEMENT

- Remove the oil filter cover by using 14 mm Allen key with O-ring and spring.
- Remove and discard the oil filter.

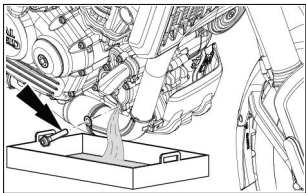


- Allow the oil to drain from the oil filter housing.
- Thoroughly clean the cover and the O-ring sealing surface.
- Install a new oil filter. Use the O-ring and lubricate the O-ring in the filter cover with water based lubricant.
- Install the cover and tighten to 22 ± 2 Nm, ensuring spring is retained in the cover.

MINOR MAINTENANCE TIPS

COOLANT DRAINING

- Possibly remove the sump guard.
- Remove the coolant filler cap on radiator and cap on expansion tank.



- Remove the coolant drain bolt on the water pump.
- Once drained, then replace the copper washer with a new part and tighten bolt to 11 ± 1 Nm.
- Expansion tank is drained by disconnecting small hose to radiator then refit the hose.

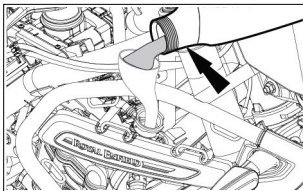
COOLANT FILLING/AIR BLEEDING



WARNING

Never open a radiator cap when the engine is hot. The pressure released can make the coolant begin to boil and expand. Boiling coolant could spurt out of the filler neck or reservoir, causing severe burns.

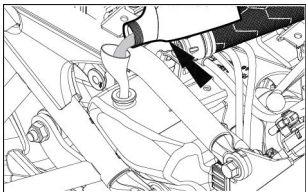
- Ensure vehicle is in straight position on ground level.
- Remove the radiator pressure cap and fill the system with recommended coolant, up to the filler neck.



- Carry out air bleeding.

MINOR MAINTENANCE TIPS

- ★ Gently tap and squeeze both engine to radiator hoses.
- ★ Tip the bike to approximately 45-60 degree angle on the left and then the right side.
- ★ If coolant level has dropped, top back up to filler neck level.
- Repeat above procedure until the level in the filler neck no longer drops.
- Refit the radiator pressure cap ensuring it is correctly fitted & fully tightened clockwise.



- Remove the radiator expansion tank cap and fill the tank to the upper level line.

- Replace the radiator expansion tank cap.
- Start the engine in neutral.
- Run the engine at idle for 5 minutes.
- Blip the throttle 3 or 4 times.
- Stop the engine and allow it to cool.
- Top up the coolant level in the expansion tank if required.
- Check for coolant leaks.



WARNING

Do not spill coolant. Collect coolant in a separate container and dispose it through authorized disposal agencies in your locality. Avoid skin or body contact with the coolant. Promptly wash affected area with soap and water.

NOTE

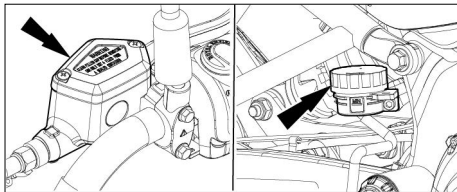
- Do not fill the coolant when a vehicle is on side stand condition.
- Coolant from Total is ready to use and does not require mixing.

MINOR MAINTENANCE TIPS

CHECKING BRAKE FLUID

Front: Check that the brake fluid reservoir is horizontal and that the fluid level is center of the window consider as a minimum level.

Rear: Check that the brake fluid reservoir is horizontal and that the fluid level is between the "MAX" level and "Min" level marks.



Place your motorcycle in an upright position on a firm, level surface.

CAUTION

- Brake fluid is highly corrosive and can cause damage to painted parts. Please ensure that brake fluid does not spill on any part of the motorcycle. In the event of a spill, please clean the area immediately with a soft cloth (preferably a wet cloth) to avoid damage.
- Do not mix DOT 4 & other brake fluid together.

NOTE

- Clean the filler cap before removing. Use only DOT 4 brake fluid from sealed container.
- Use only the specified brake fluid; otherwise, the rubber seals may deteriorate, causing leakage.
- Refill with the same type of brake fluid. Adding a brake fluid other than DOT 4 may result in a harmful chemical reaction.

MINOR MAINTENANCE TIPS

- Be careful that water or dust does not enter the brake fluid reservoir when refilling. Water will significantly lower the boiling point of the fluid and may result in vapor lock and dirt may clog the ABS hydraulic unit valves.



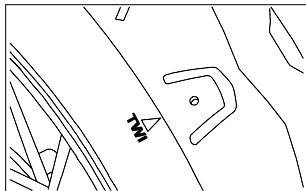
WARNING

- An insufficient brake fluid level will cause the brake system to fail.
- Old brake fluid reduces the braking effect.
- Make sure that brake fluid for the front and rear brake is changed in accordance with the periodic maintenance schedule.
- Keep brake fluid out of the reach of children.
- Do not allow brake fluid to come into contact with the skin, the eyes or clothing.

- Brake fluid is highly corrosive and can cause damage to painted parts. Ensure brake fluid does not spill on any part of the motorcycle, in the event of spill please clean the area immediately with a soft cloth to avoid damage.

INSPECTION OF TYRES AND WHEELS

- Inspect the tyres periodically for tread wear, cracks and cuts.
- Check and remove stone, splinters, nails or other particles embedded in the tyre treads.



MINOR MAINTENANCE TIPS

- Periodically inspect wheels for spokes damage and wheel rim for wobbling or run out.
- Check proper seating of the tyre beading on the rim whenever the tyre is reassembled.
- Use only recommended tyres, inflated to correct air pressure.

Tyre pressure	Front & Rear
Solo & With Pillion	32 psi/2.24 kg/cm ²



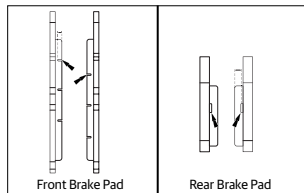
WARNING

- It is recommended to operate the motorcycle with correct tyre pressure as under inflated tyre may cause tyre to overheat and may result in tyre damage and may cause injury to the rider.
- It is recommended to use Royal Enfield tyre specification in case of replacement of new tyres, failure to

adhere the same may result in tyre damage and may cause injury to the rider.

BRAKE PADS

- The front and rear brake pads must be checked for wear at the intervals specified in the periodic maintenance chart.



MINOR MAINTENANCE TIPS

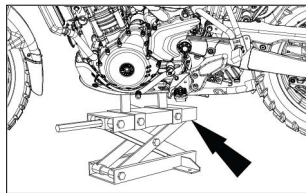
Front/Rear : The pads need to be replaced if a brake pad is worn to the indicator.

NOTE

- Royal Enfield Motorcycles fitted with disc brakes have the optimum braking systems and are built to give a superior and safer braking performance under all conditions.
- Disc braking systems can produce a mild noise under certain riding conditions. This is absolutely normal and characteristic of the disc brake pads across the motorcycle industry. This in no way will affect the performance of the motorcycle or the braking system.
- At Royal Enfield, we have robust and rigorous testing and development protocols and adhere to global validation standards of quality and durability. We are committed to giving our customers the best possible ownership experience with our motorcycles.

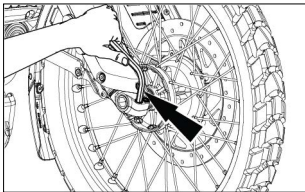
FRONT WHEEL REMOVAL

- Ensure motorcycle is upright on a firm and flat surface.
- Locate a scissor jack under the engine and lift motorcycle such that the front wheel is off the ground by minimum 15 cm.

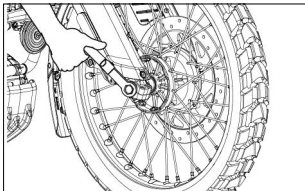


- Loosen and remove fork clamp bolt 2 Nos from RHS front fork assembly by using 6 mm Allen key available in the tool kit.

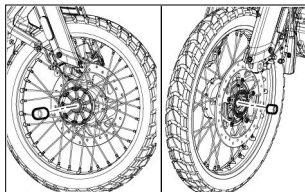
MINOR MAINTENANCE TIPS



- Loosen and remove spindle bolt from RHS front fork assembly by using front spindle adapter, ring spanner and extension tube are available in the tool kit.



- Gently pull out the spindle from RHS by hand once fully unscrewed.
- Gently lower the wheel such that it comes out of the fork legs.
- Remove spacers from front wheel hub on both LHS and RHS.

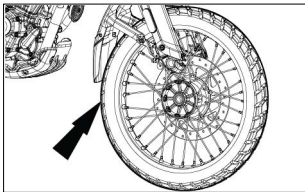


CAUTION

- Take care to secure the wheel spacers and speed sensor while removing the axle from the forks.

MINOR MAINTENANCE TIPS

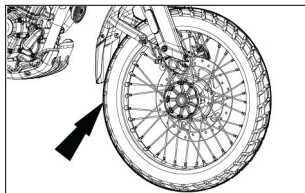
- Do not press the brake lever when front wheel is removed as this will result in the brake pads coming too far out of the brake caliper.



- Place a 4 mm thick wooden piece or cardboard sheet between the brake pads to avoid pads activation in the event the front brake lever is accidentally pressed.
- Take care not to damage the front brake disc or toner ring as it will affect the braking system and ABS.

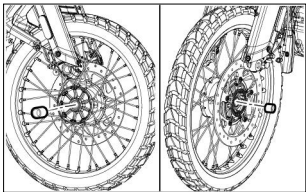
FRONT WHEEL ASSEMBLY

- Remove the wooden piece/cardboard sheet placed between the brake pads.

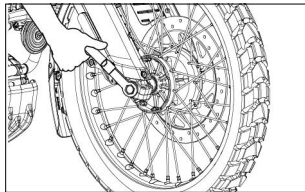


- Locate spacer to the wheel hub on both LH and RH side.
- Insert the wheel along with spacers between the fork ends. Ensure the brake disc is located between the brake pads.

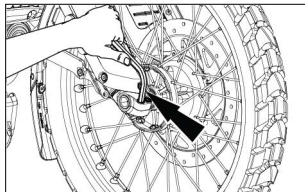
MINOR MAINTENANCE TIPS



- Support the wheel at a height that the spindle can be fitted through the fork legs and wheel. Insert the spindle from the LHS and push until the threads of the spindle engage with those of the RHS fork leg then screw spindle until fully seated.
- Tighten spindle bolt firmly on LH side.



- Tighten fork clamp bolt firmly on RH side to a torque of 25 Nm.



MINOR MAINTENANCE TIPS

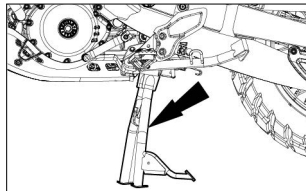
- Rotate wheel to check for smooth rotation.
- Press brake lever and check front brake efficiency.

CAUTION

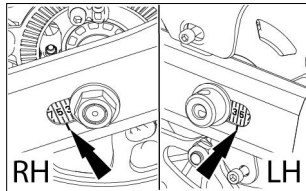
- Please exercise utmost caution while reassembling the front wheel on the motorcycle.
- Please ensure the wheel is fitted correctly before attempting to ride the motorcycle.
- Failure to do so may result in the motorcycle not performing correctly, may lead to an accident causing injury to you / other road users and may lead to loss of life.

REAR WHEEL REMOVAL

- Ensure motorcycle is upright on a firm and flat surface.
- Apply the center stand.

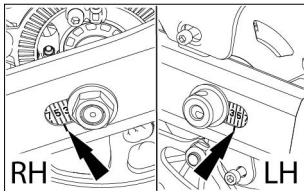


- Observe and mark the alignment indexes on both chain adjuster on left and right side swing arm.

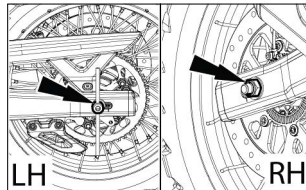


MINOR MAINTENANCE TIPS

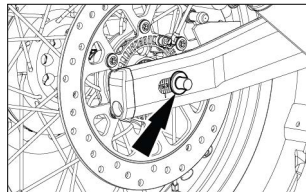
- Loosen the lock nuts and adjuster nuts fully on the left and right side chain adjuster by using 24 mm ring spanner available in the tool kit.
- Hold wheel spindle on left side firmly and loosen hex nut on right side.



- Remove the nut and washer from the wheel spindle.

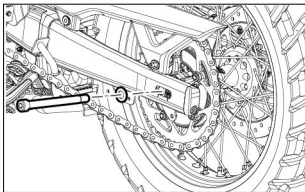


- Push rear wheel fully into the swing arm.



MINOR MAINTENANCE TIPS

- Support rear wheel from bottom and pull out wheel spindle from the left side swing arm.

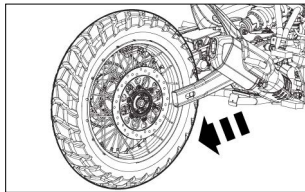


- Release the brake hose gently and remove caliper assembly from swing arm on right side.

CAUTION

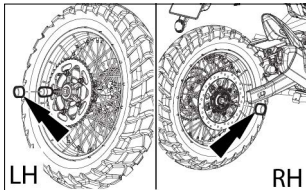
Ensure brake hose does not get damaged or kinked while removing. Support caliper assembly suitably and away from swing arm.

- Release the chain from the sprocket and ensure it does not get jammed or damaged when removing rear wheel.



- Remove support from wheel bottom and gently slide out rear wheel from the swing arm with rear sprocket, brake disc and spacers.

MINOR MAINTENANCE TIPS



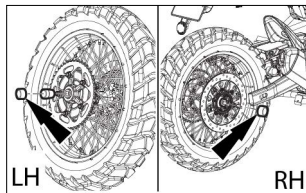
CAUTION

Do not press the rear brake pedal when the rear wheel is being removed as this will cause the brake pads to dislocate from the brake caliper.

- Place a 4 mm thick wooden piece or cardboard sheet between the brake pads to avoid activation of brake pads if rear brake pedal is accidentally pressed.
- Do not pull up the rear brake pedal to lift or raise the motorcycle for any reason.

REAR WHEEL ASSEMBLY

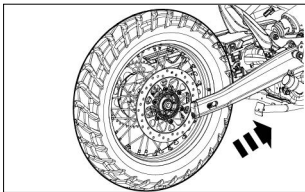
- Ensure stepped spacer is located on the brake disc side, the lip of the spacer should be inserted through the bearing seal.



- Ensure spacer is located along the sprocket side on the wheel hub.
- Ensure that the chain adjuster are located properly inside the swing arm left and right sides.

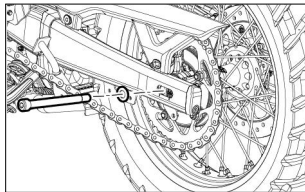
MINOR MAINTENANCE TIPS

- Locate caliper assembly on the tab along the swing arm right side.



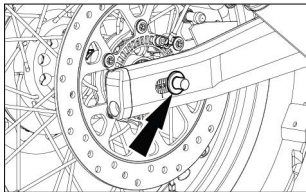
- Locate rear wheel with the sprocket to the left side ensuring the brake disc is in between the brake pads on right side.
- Lift up the rear wheel and ensure that the slots in the swing arm brake caliper bracket holes in chain adjusters and the center hole in the hub are aligned.

- Support rear wheel suitably and insert rear wheel spindle along the left side swing arm into the wheel hub.



- Tab spindle gently into wheel hub slot till the threads are completely visible on the right side.
- Assemble the drive chain on the sprocket and ensure it is seated correctly.
- Check for free and smooth rotation of the rear wheel.
- Assemble washer and hex nut on wheel spindle on right side.

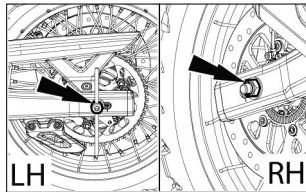
MINOR MAINTENANCE TIPS



NOTE

Do not tighten hex nut fully.

- Tighten chain adjuster nuts on left and right adjuster such that the index marks are aligned correctly on both sides of the swing arm.
- Check and ensure correct chain tension and wheel alignment.
- Hold spindle firmly on left side and tighten hex nut on right side.
- Locate the caliper assembly on swing arm right side.



- Check rear brake for proper operating efficiency.

CAUTION

Please exercise utmost caution while reassembling the rear wheel on the motorcycle.

Please ensure the wheel is fitted correctly before attempting to ride the motorcycle.

Failure to do so will result in poor performance of motorcycle which may lead to an accident causing injury to you / other road users and may lead to loss of life.

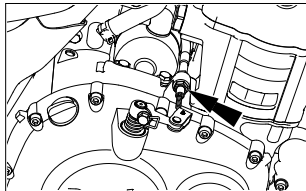
MINOR MAINTENANCE TIPS

GENERAL CLUTCH LEVER FREE PLAY

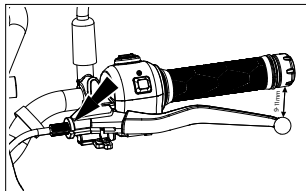
- Clutch lever free play should be set to ensure that at any position when moving from left hand (LH) to right hand (RH) there is a certain amount of free play present at all conditions.

CLUTCH CABLE FREE PLAY INSPECTION / ADJUSTMENT

1. Clutch cable free play, plays a major role in clutch life & it is recommended to adjust whenever required for good clutch life.
2. Ensure the cable fitted correctly.
3. Steering handlebar to right hand lock position.
4. Using a 12 mm spanner, loosen the adjusting nut closest to the lifter arm fully and measuring the instrument.



5. Adjust the position of the inner adjusting nut to provide 9 - 11 mm of free play in the clutch lever ball end (from its furthest position) before engine engagement.



MINOR MAINTENANCE TIPS

6. Pull the lever 3 times and check the gap again, adjust as per the previous point procedure if necessary.
7. Using both spanners, tighten the nut closest to the lifter arm without moving the inner nut.
8. Rotate the handlebar 5 or more times, returning to a straight position and re-check the free play in the lever.
9. Adjust as per steps 4 & 5 procedure if necessary.

CAUTION

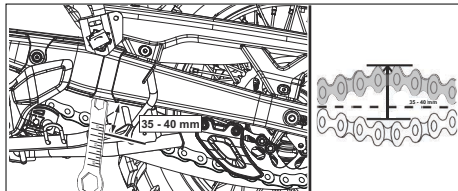
- If you are not comfortable to adjust free play as per stated procedure, please visit near by service centre.
- If desired free play is not achieved or there is a suspect of clutch slip- keep positive free play & reach nearest service centre.
- Adjuster nut should rest properly in the threaded region.

- Clutch free play should be checked and adjusted only when the engine is cold.
- During clutch play checking, check the clutch cable for any abnormality as it is in vehicle condition.
- If any abnormality suspected, reach nearest service centre.

DRIVE CHAIN TENSION (FREE PLAY 35 - 40 mm)

1. Park motorcycle up right on a firm and flat surface.
2. Ensure the motorcycle is in neutral position.
3. Rotate the wheel until you find a position, where the chain slackness is at it's lowest/tightest.
4. At the specified point, press the chain upwards and measure the distance to the swing arm.
5. Press the chain downwards and measure the distance to the swing arm.

MINOR MAINTENANCE TIPS



6. The difference between values in step 4 and step 5 should be the drive chain free play is 35 to 40 mm.
7. If the drive chain free play is found to be incorrect adjust as follows:
 - (a) Loosen the rear wheel spindle.
 - (b) Push the rear wheel to the extreme front in the swing arm slot.
 - (c) Turn the adjusting Allen bolt in small increments evenly on both sides, until the specified slackness is

achieved. Wheel position in the slot on both sides should always be kept equal between left and right.

- (d) Tighten the wheel spindle torque value is 70 Nm and tighten the adjusting Allen bolt torque value is 10 Nm. Recheck the slackness in the chain to confirm it, if it's still not within specification, repeat the adjustment procedure first three steps.



WARNING

- Chain slackness beyond the specified limit will lead to chain slippage and may also cause increased wear rates to chain and sprockets.
- Please ensure the both wheels are aligned correctly, after adjusting the chain and before tightening the rear wheel spindle nut.

MINOR MAINTENANCE TIPS

BATTERY AND MAINTENANCE

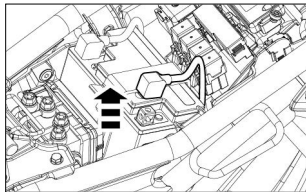
- The motorcycle is provided with 12 V - 8 Ah VRLA battery.
- The battery must be periodically checked for cleanliness and corrosion free terminals.

NOTE

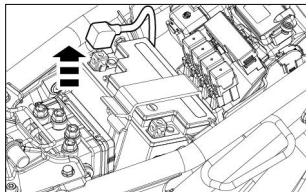
The poor contact or loose fitment of battery terminals may cause ECU failure.

DISMANTLING

- Switch "OFF" the engine and remove ignition key from the key barrel.
- The battery is located underneath the rider seat.
- Remove the pillion and rider seat as per procedure.
- Disconnect battery black negative (-ve) terminal bolt by using 10 mm spanner available in the tool kit.

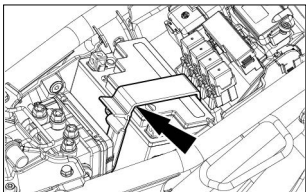


- Disconnect battery red positive (+ve) terminal bolt by using 10 mm spanner available in the tool kit.

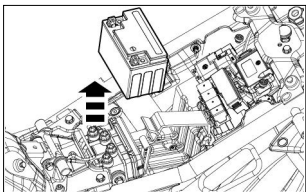


MINOR MAINTENANCE TIPS

- Pull battery strap (belt) downwards and release strap lock from battery strap bracket.



- Remove the battery from tray.



WARNING

Always disconnect the black negative (-ve) battery cable first and then the red positive (+ve) cable while removing the battery connections.

NOTE

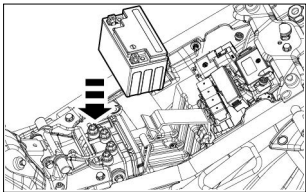
Usage of frequency for motorcycle is very important for battery to be in good performance condition. If the motorcycle is being used very rarely or sparingly and the terminals are not disconnected the battery is bound to lose its charge and result in a dead battery.

For checking the battery voltage contact Royal Enfield Authorised Service Centre or battery service centre.

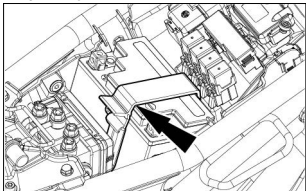
ASSEMBLY

- Assemble battery into tray.

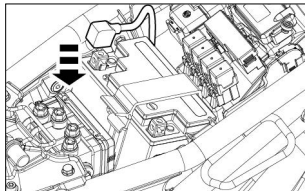
MINOR MAINTENANCE TIPS



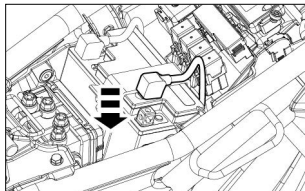
- Pull battery strap (belt) downwards to fix strap lock into battery strap bracket.



- Connect battery red positive (+ve) terminal bolt.



- Connect battery black negative (-ve) terminal bolt.



MINOR MAINTENANCE TIPS

- Refit the rider and pillion seat as per procedure.

CAUTION

Connect the red (+ve) positive terminal after connect black (-ve) negative terminal only.

Keep the red (+ve) positive terminal and (-ve) negative terminal cables firmly connected to the respective battery terminals. Failure to do so may result in damage to the motorcycle electrical system.

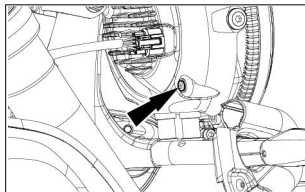
NOTE

Clean the wire terminals free from corrosion and keep the terminals coated with petroleum jelly.

CHANGING ELECTRICAL COMPONENTS

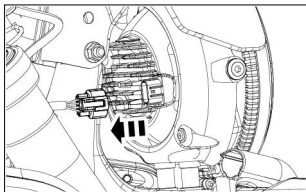
HEADLAMP DISMANTLING

- Gently loosen and remove the head light beam adjustment screw.

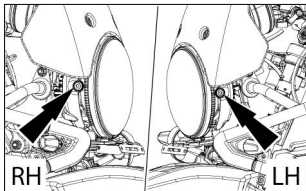


- Disconnect head lamp coupler.

MINOR MAINTENANCE TIPS



- Gently loosen and remove the LH & RH side head lamp holder Allen screws by using 4 mm Allen key.

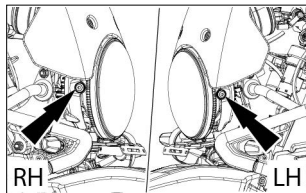


NOTE

- The headlamp has a LED lighting system. In the event of failure, the headlamp LED assembly should be replaced.
- Contact an Royal Enfield Authorised Dealer/Service Centre to replace the same.

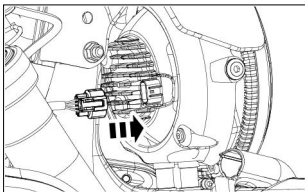
HEADLAMP ASSEMBLY

- Tighten and refit the LH & RH side head lamp holder Allen screws.

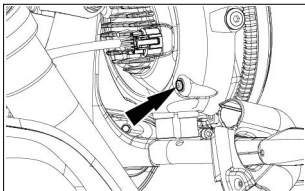


MINOR MAINTENANCE TIPS

- Connect the head lamp coupler.

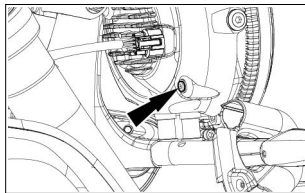


- Tighten and refit the head light beam adjustment screw.



HEAD LIGHT BEAM ADJUSTMENT

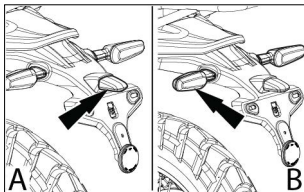
- The headlight beam focus can be adjusted in vertical direction by using the adjusting screw by turning clockwise or anti clockwise direction.
- The adjusting screw is used to increase or decrease the height of the headlight beam in direction vertical direction only. This may be required to increase the visibility and to help prevent the other riders/vehicles passing nearby.



MINOR MAINTENANCE TIPS

TAIL LAMP/TRAFFICATOR & LICENSE PLATE ILLUMINATOR

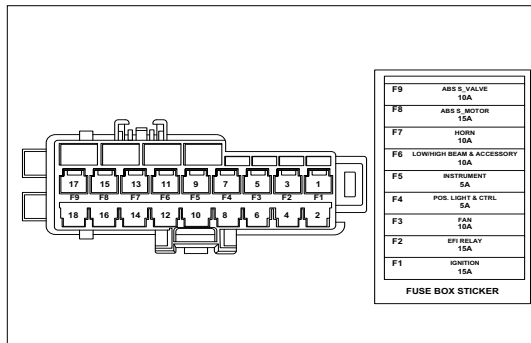
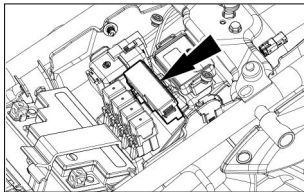
- The tail lamp/trafficator (B) & license plate illuminator (A) has a LED lighting system. In the event of failure, the entire tail lamp/trafficator (B) & license plate illuminator (A) assembly should be replaced.
- Contact an Royal Enfield Authorised Dealer/Service Centre to replace the same.



MINOR MAINTENANCE TIPS

FUSE AND FUSE CARRIER

- The fuse carrier is located underneath rider seat.
- Insert ignition key and turn it clockwise.
- Remove the pillion and rider seat outside for opening the same.



MINOR MAINTENANCE TIPS

MINI BLADE FUSE USAGE LIST

Fuse ID number	Color	Rating	Remarks
F1	Blue	15 A	Ignition
F2	Blue	15 A	EFI relay
F3	Red	10 A	Fan
F4	Yellow	5 A	POS, lights & CTRL
F5	Yellow	5 A	Instruments
F6	Red	10 A	Low/High beam Accessory
F7	Red	10 A	Horn
F8	Blue	15 A	ABS S motor
F9	Red	10 A	ABS valve
Spare fuse list			
SF1	Yellow	5 A	Spare fuse
SF2	Red	10 A	
SF3	Blue	15 A	



WARNING

Please get the electrical system of your motorcycle checked thoroughly and get the faults corrected immediately after experiencing any fuse failure. Failure to do so may result in repeated fuse failure.

Usage of fuses other than specified rating or usage of any other conductive materials or low grade fuses will damage the complete electrical system.

Please ensure to replace a spare fuse in the holder at the earliest opportunity.

Any attempt to jumper a defective fuse gives rise to the risk of a short-circuit and fire. Always replace a defective fuse with a new fuse of the same rating.

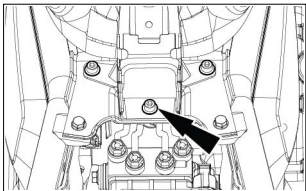
NOTE

Make sure the ignition switch is in "OFF" position when replacing the bulbs, fuses and electrical parts.

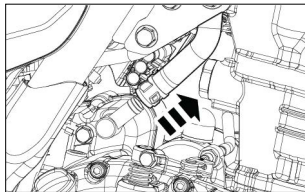
MINOR MAINTENANCE TIPS

AIR FILTER CLEANING

- The air filter is located underneath fuel tank.
- Remove the pillion and rider seats as per procedure.
- Remove the fuel tank bracket front bolt 2 Nos by using 5 mm Allen key available in the tool kit and remove the central bolt by using suitable tool.



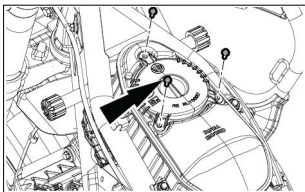
- Disconnect the fuel flow hose and fuel tank sensor.



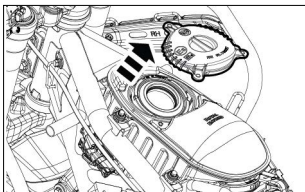
- Pull out the fuel tank outside from frame.

MINOR MAINTENANCE TIPS

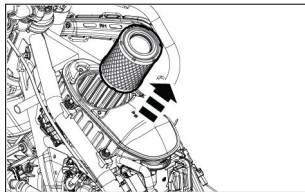
- Loosen and remove the air filter cover Allen screw 3 Nos by using 4 mm Allen key available in the tool kit.



- Take out the cover from air filter box.



- Pull out filter element and check for dust, dirt and oil particles inside air filter box clean carefully.



NOTE

Usage of high pressure compressed air is not recommended to clean air filter element. Fitment of air filter element is in the reverse order of removal process.

LONG TRIP PRECAUTIONS

CHECKS PRIOR TO THE COMMENCEMENT OF A LONG JOURNEY

- Service the motorcycle at Royal Enfield Authorised Service Centre.
- Ensure sufficient quantity of fuel is always available in the fuel tank for the journey planned.
- Check and correct tyre pressure if necessary.

CHECK ALL OF THESE ASPECTS BEFORE LONG RIDE

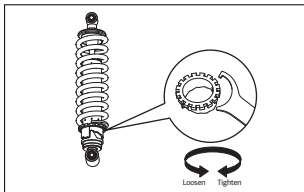
- Any loose fasteners.
- Condition of the tyres.
- Correct engine oil level and coolant level.
- Working of all lights and horn.
- Proper drive chain tension.
- Clutch cable free play.

ITEMS TO BE CARRIED

- Tools kit.
- Trafficator light and fuse.
- Accelerator and clutch cables.
- Spark plug, spark plug cap and fuel hose.

REAR SUSPENSION SETTING

- Rest the motorcycle on center stand.
- Ensure the tyre pressure is at recommended specification.
- Ensure adjuster are clear of all dirt and debris before adjusting, if they have dirt or debris please clean it suitably before adjusting.



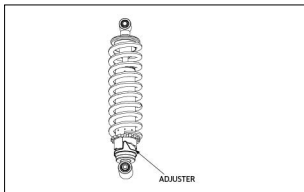
- The adjuster is a 6 step adjuster and it is kept at 3rd notch position.

- Adjust shock preload by rotating the adjuster clockwise using C-spanner to increase the preload.
- Adjust shock preload by rotating anti-clockwise using C-spanner to decrease preload (to make it to first notch position).

NOTE

- Adjusting the suspension requires a C-spanner. It is recommended to use the C-spanner that is given in your vehicle tool kit. Extension tube to be used for leverage purposes.
- The best spring preload setting is achieved when it is set for the weight of the rider and that of any luggage and a passenger.

REAR SUSPENSION SETTING



- We recommend to increase the preload and keep it at final notch for fully loaded (GVW condition), thus ensuring an ideal compromise between handling and stability.

Condition	Max reference payload	Suspension setting notch	Tyre pressure (psi)	
			Front	Rear
Unladen / One up loading / Rider only	Based on rider weight	3 rd	32	
Laden / Two up / Rider + Pillions / Rider + Pillion + Accessories/off road condition	Up to a maximum of 196 kg payload (Inc of rider weight, pillion weight and accessories)	6 th		

WASHING PROCEDURE

PRECAUTIONS

- Remove ignition key and seal the ignition key barrel slot using adhesive tape.
- Please remove tool kit and other relevant documents if any underneath the pillion seat before proceeding for washing of the motorcycle.
- Cover the silencer tail pipe, horn and control switches with suitable plastic bags and tie if firmly to prevent water entry.
- Wash the motorcycle only when the engine is in cold condition.
- Do not remove side panel while washing to avoid water entry.
- Brush engine area with a recommend non corrosive solvent to remove dirt or grease.
- Use low pressure water jet to clean.
- Never spray water with great force on head lamp, speedometer, flasher lights, front and rear wheel hubs, electrical connections and wires, control cables, spark plug, battery, ABS ECU, EMS ECU, side mirrors, steering stem etc.
- Do not use high pressure washers or steam jet cleaners near the seal of headstock bearing or steering stem bearing, seal of wheel bearing, brake calipers, air intakes & exhaust outlets.
- Do not apply any corrosive solvent on painted surfaces or rubber parts.
- Use lukewarm water and mild detergent on the painted components to remove dirt, etc.
- Clean motorcycle thoroughly with plain water to remove the detergent.
- Never spray water towards bottom side of instrument cluster directly to avoid water entry through breather holes.
- If possible, use compressed air and blow off water particles from the obscure areas of the motorcycle, electrical connections etc.

WASHING PROCEDURE

- Once the motorcycle has been ridden in salty conditions (i.e. during winter in places where road salt is used) or near coastal areas it is recommended to wash your motorcycle with cold water after the ride to prevent corrosion or rust build-up. Please do not use warm water for washing as it may damage the motorcycle due to chemical reaction with the salt. After washing process once the motorcycle is completely dry it is recommended to apply anti corrosion spray on all the metal and chrome plated areas to protect the parts from corrosion.
- It is recommended not to apply the anti-corrosion spray on the brake discs.
- Do not use petrol, brake oil or other flammable liquids to clean or wash on electronic parts.
- The parts chosen using motorcycle configurator should not be washed with soap or chemical, use only with plain water.
- No direct jet at the edges of decal, electrical parts, coupler joints, silencer tail pipe, radiator lubrication points

like steering cone kit, brake pedal, wheel bearings, chain, brake cam & swing arm bushes to be washed in spray mode only (not in jet mode).

AFTER WASHING

- Ensure, the motorcycle is thoroughly dry by wiping with a clean soft lint free absorbent cloth or chamois leather.
- Remove all adhesive tapes.
- Lubricate control cables, pivots for footrest, side stand, center stand, brake and gear shifter linkages, drive chain etc., with lube oil.
- Polish the painted and plated surfaces using recommended automobile polishing wax.
- Start the engine and allow to run at an idling speed for a few minutes to warm up engine.
- Drive the motorcycle slowly, apply both the brakes intermittently to dry up the water in brake pads.
- Please clean / wipe out water spoils completely inside LH & RH side panel before keeping tools kit and other relevant documents underneath the pillion seat.

STORAGE PRECAUTIONS

In-case your motorcycle is not going to be used for a month or more, the following precautions should be taken.

- Get the motorcycle serviced through a Royal Enfield Authorised Service Centre.
- Drain the fuel completely from the fuel tank and induction system.
- Clean drive chain thoroughly and apply Royal Enfield recommended chain lubricant.
- Wipe off excess lubricant after 5 minutes of application.
- Remove charging circuit fuse from the fuse box.
- Store the battery in a cool, dry and well ventilated place.
- Cover the silencer with suitable bags to prevent moisture entry. Set the motorcycle on its center stand.
- Apply anti rust solutions on all plated parts. Take care not to apply this solution on chrome, rubber or painted parts. Store motorcycle in a clean covered area free of moisture and dust.
- For re-use after storage, it is preferable to get the motorcycle prepared through a Royal Enfield Authorised Service Centre to ensure the motorcycle is restored to its peak operating conditions.
- If the motorcycle is not used for a month or longer, It is advised to disconnect battery terminals and remove the battery. Before refitting the battery in the motorcycle, check the battery voltage is within specification, if not, recharge it from authorized service workshop/battery dealer.

TROUBLESHOOTING

We have listed below a few basic checks in case your motorcycle is not functioning. If in case the problem is not rectified after these checks, it is necessary to get the motorcycle checked by a Royal Enfield Authorised Dealer/ Service Centre to rectify the problem and to ensure trouble free performance.

Symptom	Observations	Check for/Remedy
Engine does not start	If the ignition/Engine kill switch in OFF position	Switch ON ignition
	If inadequate fuel level in fuel tank	Top up the fuel
	If the lights are dim/weak horn sound	Weak or discharged battery / problem in charging circuit Contact Authorised service center
	If fuse is blown	1. Replace the fuse with same rating 2. Contact Authorised service center if problem persists
	Connection issue with spark plug, cap, high tension cable	Reconnect spark plug, cap and high tension cable.

TROUBLESHOOTING

Symptom	Observations	Check for/Remedy
Engine starts but vehicle OFF's automatically when apply the first gear	Side stand indicator is glowing in the cluster	Side stand should be kept up right
Engine misfires & runs erratically/stops.	If any adulteration/water in fuel	Contact Authorised service center
	If the engine is too hot	Switch OFF the engine and allow it to cool down
Poor pickup	If engine RPM raises disproportionately to the vehicle speed	Adjust the clutch free play and contact Authorised service center
ABS (Anti - lock Braking System)	If the ABS lamp continuously ON	Contact Authorised service center

ENVIRONMENT CARE

BE AN ENVIRONMENTALLY CONSCIOUS RIDER

You've ridden through some beautiful places on your Royal Enfield. Won't you like to keep them that way? Here are some tips to help you keep those places unspoilt so that others can enjoy them too:

DISPOSAL OF END OF LIFE - PARTS / VEHICLE

While your liquid waste like engine oil, coolant and other cleaning solvents need to be regularly replaced, what happens to them? Make sure they are not dumped in the soil or water bodies.

You shall store them in a container and handover to an Govt authorized recycling agent, If any or RE Service Centre.

In the case of battery, tyres, plastic parts, electric or electronic parts and oil filter shall be handed over only to an authorized recycling agent, If any or RE Service Centre.

The cleaning solvents or sprays whichever used for cleaning your bike shall be disposed in an environmentally friendly manner.

In case you want to dispose your vehicle considered as an end of life vehicle, please handover the vehicle only to an authorized / registered vehicle scrapping facility near you or contact local authorities to follow due process.

PERIODICAL MAINTENANCE

The maintenance schedule detailed here will help you to maintain your Himalayan motorcycle meticulously to get along trouble free service. The schedule provided herein is based upon an average riding conditions and indicates the km at which regular inspections, adjustments, replacements and lubrications are to be carried out. The frequency of the maintenance must be shortened depending upon the severity of the driving condition or if the motorcycle is used in a very dust environment. Contact the nearest Royal Enfield Authorised Service Centre for expert advice and to carry out the required maintenance.

S.No	DESCRIPTION	PERIODICAL MAINTENANCE (Whichever is earlier)					
		0.5	10	20	30	40	50
	km (x 1,000)	0.5	10	20	30	40	50
	miles (x 1,000)	0.3	6	12	18	24	30
	Months	1.5	12	24	36	48	60
1	Engine oil	R	R	R	R	R	R
		Check oil level every 1000 km (or earlier as required) and top up as required					
2	Engine oil filter	R	R	R	R	R	R
3	Inlet and exhaust valve clearance		I&A	I&A		I&A	

PERIODICAL MAINTENANCE

S.No	DESCRIPTION	PERIODICAL MAINTENANCE (Whichever is earlier)					
		km (x 1,000)	0.5	10	20	30	40
	miles (x 1,000)	0.3	6	12	18	24	30
	Months	1.5	12	24	36	48	60
4	Spark plug					R	
5	HT lead						
6	Rubber hose, air filter to throttle body						
7	Rubber hose, inlet manifold / adapter						
8	Evaporative emission equipment rubber hoses						
9	Air filter element with O Ring on Cover		R	R	R	R	R
		Clean / Replace more frequently if operated in dusty condition					
10	Vent pipe under air filter box						
11	Coolant				R		

PERIODICAL MAINTENANCE

S.No	DESCRIPTION	PERIODICAL MAINTENANCE (Whichever is earlier)					
		0.5	10	20	30	40	50
	km (x 1,000)						
	miles (x 1,000)	0.3	6	12	18	24	30
	Months	1.5	12	24	36	48	60
12	Fuel pump (under tank) mounting		I	I	I	I	I
13	Fuel pump strainer				R		
						C	
14	Throttle body	Throttle body should be removed from the vehicle and cleaned with a dry microfibre cloth. Usage of throttle body cleaners or any similar solvent or alcohol based liquids for cleaning is strictly prohibited. Throttle body cleaning every 40000 km or 48 months whichever is earlier as required.					
15	Clutch cable / lever free play	I	I	I	I	I	I
		Adjust every 1000 km (or earlier as required)					

PERIODICAL MAINTENANCE

S.No	DESCRIPTION	PERIODICAL MAINTENANCE (Whichever is earlier)					
		0.5	10	20	30	40	50
	km (x 1,000)	0.5	10	20	30	40	50
	miles (x 1,000)	0.3	6	12	18	24	30
	Months	1.5	12	24	36	48	60
16	Clutch lever & front brake lever pivots	L	L	L	L	L	L
		Lubricate every 1000 km (or earlier as required)					
17	Brake pads - front & rear	I	I	I	I	I	I
18	Brake fluid - front & rear	I	I	R	I	R	I
19	Rear brake pedal pivot	L	L	L	L	L	L
20	Brake hose and banjo bolt - front & rear	I	I	I	I	I	I
21	Steering movement	I	I	I	I	I	I
22	Rear wheel drive chain	I	I	I	I	I	I
		Clean, Lubricate and Adjust every 500 km (or earlier as required), or after riding in wet/dusty/muddy conditions					

PERIODICAL MAINTENANCE

S.No	DESCRIPTION	PERIODICAL MAINTENANCE (Whichever is earlier)					
		km (x 1,000)	0.5	10	20	30	40
	miles (x 1,000)	0.3	6	12	18	24	30
	Months	1.5	12	24	36	48	60
23	Rear wheel cush rubbers						
24	Battery terminals (apply petroleum jelly)						
25	Earth wire eyelet tightness						
26	Tyre wear pattern front & rear						
27	Side stand & centre stand pivots	L	L	L	L	L	L
28	Rider & pillion footrest pivots	L	L	L	L	L	L
29	Engine Mount, Swing arm, Front & Rear Wheel Spindle, T Stem Pinch bolts, Rear Sub Frame Mounting Bolts, Rear Linkage						

PERIODICAL MAINTENANCE

S.No	DESCRIPTION	PERIODICAL MAINTENANCE (Whichever is earlier)					
		0.5	10	20	30	40	50
	km (x 1,000)	0.5	10	20	30	40	50
	miles (x 1,000)	0.3	6	12	18	24	30
	Months	1.5	12	24	36	48	60
30	Spoke Tightness & Check for runout/ faceout of rims						

A : Adjust C : Clean I : Inspect (Clean, Adjust, Lubricate or replace if necessary) L : Lubricate R : Replace

NOTE

For maintenance after 50,000 km (31068.56 miles), please repeat the same frequency specified above, in consultation with a Royal Enfield Authorised Dealer / Service Centre.

GENERAL WARRANTY TERMS AND CONDITIONS

Royal Enfield motorcycles ("Motorcycles") are manufactured by following best quality practices in respect of the material and workmanship. All motorcycles (irrespective of their country of registration) can avail limited warranty services from a Royal Enfield Authorised Dealer Workshop / Service Centre located in another country, In addition to its country of registration; and customers should refer to the terms and conditions mentioned under Borderless Warranty Policy.

IMPORTANT: Please make sure you have read and understood these terms and conditions

This warranty outlines the terms and conditions governing the Motorcycles warranty coverage obligations and exclusions only and not on the part of any Royal Enfield Authorised Dealer. Nothing in this document should be construed as a principle agent relationship between Royal Enfield and any of its Authorised Dealers or their staff. Royal Enfield warrants its Motorcycles to be free from manufacturing and material defects under normal use subject to the following conditions:

1. Warranty for any Motorcycle shall be in force until the expiry of a period of 36 months , whichever comes first from the date of the Sale of the motorcycle to the first owner and to any subsequent owners for the balance of the remaining period until the expiry of above mentioned warranty period.
2. In order to avail warranty benefits by second or subsequent owner, the second or subsequent owner should inform the nearest Royal Enfield Service Centre about the purchase of the motorcycle and shall fill in the requisite details in the form as requested by Authorized Royal Enfield Service Centre.

GENERAL WARRANTY TERMS AND CONDITIONS

3. The warranty on any Motorcycle shall be applicable only if all the maintenance and services with respect to the said Motorcycle are availed by the owner(s) within the respective Warranty Period/kilometer ranges as per the schedule in the owner's manual from Royal Enfield Authorized Dealer/Service Centre.
4. During the warranty term, Royal Enfield's warranty obligations shall be limited only to repair or replace the faulty part(s) with a new part(s) only if such faulty part(s) on examination is deemed to have a manufacturing defect. Defective part(s) which have been replaced under the Warranty term shall become the sole property of Royal Enfield.
5. This warranty is expressly limited to the repair or replacement of the genuine parts with a manufacturing defect and is the sole remedy of warranty.
6. To the fullest extent permissible by applicable law, all other warranties of any kind, either express or implied, are disclaimed. The exclusion of implied warranties mentioned herein does not apply to the extent prohibited by any applicable law.
7. Warranty shall not apply to:
 - (a) Consumables including but not limited to oil, oil filter, brake fluid, coolant, fuel, grease etc. used during repair/ replacement are not covered and such consumables shall be chargeable to the customer.

GENERAL WARRANTY TERMS AND CONDITIONS

- (b) The customer assumes all the risk and liability arising out of his or her repairs to the Product or replacement parts thereto or arising out of his or her installation of replacement parts thereto. If any time during the warranty period, the Product or any part or parts thereof are removed, altered, tampered, adjusted, modified, dismantled, repaired or handled in any way whatsoever by any person or persons not authorized by the Company, this Policy shall immediately cease to be valid and become void initially and of no effect whatsoever.
- (c) Normal ageing (wear and tear), deterioration or rusting of plated parts, paints coat, rubber parts, soft items, glass items, plastic parts etc. Components like oil filter, air filter paper element, control cables, brake shoes/brake pads, clutch plates, drive chain & sprocket kit, steering ball races, electrical equipment, wiring harness etc., which are subjected to normal wear and tear. Failures occurred due to use of non-recommended grade lubricants, coolant, brake fluid, fork oil, fuel or improper level.
- (d) Damages due to use of non-genuine parts or accessories, lack of proper maintenance, incorrect riding habits. Damages to engine management system parts (like ECU, throttle body, sensors, etc.) due to tampering which affects the performance of the motorcycle. Parts damaged due to accidents, collision, neglect, abuse, mishandling, fire or any act of God etc.
- (e) Irregularities not recognised as affecting the quality or function of the motorcycle such as slight vibration, oil leakage, discoloration of exhaust pipe bend and cat region/silencer/soft or hard shock absorber etc.

GENERAL WARRANTY TERMS AND CONDITIONS

- (f) Discoloration of exhaust pipe & silencer, as it is a natural process that will happen during usage.
- (g) Defects or damage arising from fitment of unauthorised accessories or parts like side cars, trailer hitches etc., or additional electrical loads.
- (h) Motorcycle serviced or repaired at unauthorised service centres.
- (i) Motorcycle used for competitions/racing/stage rallying/ /stunts//jumping/acrobatics etc. or similar activities as Motorcycles are not designed or intended for such purpose or usage
- (j) Electrical component like bulbs, fuses etc., and electronic components failure including ECU due to repairs by arc welding.
- (k) Motorcycle found with tampering/drilling/welding mark on any part of the frame.
- (l) Normal maintenance operations like adjustment of brakes, cleaning fuel system, engine tune-up and other such adjustments.
- (m) Oxidization of buffed/painted/powder coated items etc
- (n) Any damage resulting due to any force major event including, without limitation, any act of war, act of God or nature, earthquake, hurricanes, tornadoes, flood, fire or other similar casualty, riot, terrorism etc.
- (o) Any damage, failure or loss caused by improper - assembly, maintenance, storage or use of the motorcycle or parts thereof.

GENERAL WARRANTY TERMS AND CONDITIONS

8. Use only Royal Enfield approved parts and accessories (as applicable). Use of other manufacturer's performance parts will void your motorcycle warranty.
9. The warranty will be null and void if :
 - (a) The Motorcycle is used in a manner other than for recreation or transportation; or
 - (b) The Motorcycle is modified in any manner; or
 - (c) The serial number /identification code is deleted, defaced, altered, effaced or removed.
10. The following are specifically excluded from the terms and provisions of this warranty:
 - (a) Labour costs for fitting replacement parts under this warranty unless the original warranted part or accessory was fitted by any Royal Enfield Authorised Dealer.
 - (b) Any RE accessory modified for use or installed on a RE Motorcycle model for which it is not designed or recommended.
11. Royal Enfield reserves the right to finally decide on all warranty claims.
12. RE reserves the right to make changes in the design of the motorcycle models without any obligation to install these changes on previously supplied Motorcycles.

GENERAL WARRANTY TERMS AND CONDITIONS

13. Royal Enfield may, as a result of the purchase of motorcycle/ its parts and prescribed accessories/ servicing of motorcycles/ claiming of any applicable warranty during the Warranty Period; by you (i.e., customer), receive sensitive and/or personal data and information relating to you or third parties associated with you (such as your spouse or family members, or relatives). Such data may be received from you, or from other sources, and some sensitive/personal data may be recorded directly or indirectly by internal security systems of Royal Enfield or by other means. Royal Enfield may process such data for relevant and limited purposes and in this regard, you expressly consent to the following:
- (a) The processing of sensitive personal data and information pertaining to you or the third parties associated with you, by Royal Enfield.
 - (b) The collection and processing of sensitive personal data and information about you for limited purposes;
 - (c) The worldwide transfer of sensitive personal data and information pertaining to you or the third parties associated with you, held by Royal Enfield to its service providers, dealers, suppliers, advisors and offices of Royal Enfield's worldwide organization and to third parties where disclosure to such third parties is required in the normal course of business or by law; and use of the your personal images and voices in marketing material, videos, etc.

GENERAL WARRANTY TERMS AND CONDITIONS

In the event you wish to withdraw the express consent provided in point 13 above, you agree to send an email at support@royalenfield.com specifying that you wish to withdraw such consent and RE shall accordingly delete all the sensitive and/or personal data pertaining to you, as available in the records of RE within a reasonable time, in accordance with applicable laws.

14. The exclusive remedy for breach of this warranty shall be, at Royal Enfield's option, repair or replacement of any defective materials, components, or products. The remedies set forth in this warranty are the only remedies available to any person for breach of this warranty. RE shall have no liability to any person for incidental, consequential or special damages of any description, whether arising out of express or implied warranty or any other contract, negligence, or other tort or otherwise. This exclusion of consequential, incidental, and special damages is independent from and shall survive any finding that the exclusive remedy failed of its essential purpose.
15. Disclaimer of Warranties: Except for warranties expressly made herein, RE makes no warranties or representations express or implied, either in fact or by operation of law, statutory or otherwise.
16. The General Warranty shall be governed by the laws of India and you hereby consent to the exclusive jurisdiction and venue of courts in New Delhi, India.

BORDERLESS WARRANTY TERMS AND CONDITIONS

RE Borderless Warranty (not applicable for motorcycles exported from one country to another under personal imports) is subject to following conditions.



1. The rider should carry maintenance and service records, proof of ownership and Motorcycle registration document (original / photocopy / soft copy) for verification by the Royal Enfield Authorized Dealer.
2. The periodic maintenance services have been availed in the respective period/kilometer ranges as per the schedule in the owner's manual from a Royal Enfield Authorized Dealer Workshop/Service Centre.
3. Royal Enfield Authorized Dealer Workshop's / Service Centre's obligations shall be limited to repairing/replacing the genuine part(s) of the motorcycle free of cost only if the part(s), on examination, is deemed to have a manufacturing defect. Defective part(s) which have been replaced will become the sole property of Royal Enfield after due verification.
4. The rider shall transport the motorcycle to/from a Royal Enfield Authorized Dealer Workshop / Service Centre on his own cost and means.

BORDERLESS WARRANTY TERMS AND CONDITIONS

5. Royal Enfield Authorized Dealer Workshop / Service Centre shall work towards delivering the motorcycle at the best possible time. However, servicing time /period may be longer than usual / extended subject to the availability of required emission / country specific homologated spare parts in the given country.
6. Royal Enfield Authorized Dealer Workshop / Service Centre shall take utmost care while disassembly and reassembly or removal and refitment of non-genuine spare parts and accessories including electrical or electronics items like fog lamps, high power lamps, aftermarket horns, mobile phone charger, navigator etc. However, the Royal Enfield Authorized Dealer Workshop / Service Center shall not take responsibility for any breakage / damage / malfunction / inability to refit due to non-availability of special tools / skills etc for assembling the non-genuine spare parts and or accessories while servicing / repairing the motorcycle.
7. Neither RE nor any Royal Enfield Authorized Dealers and / or its distributors shall be held liable for any loss including loss of time / money due to delay in servicing / repairing the motorcycle and the rider is responsible to make his own arrangement for accommodation, further travel etc in such cases.
8. In the event the motorcycle is required to be towed to another workshop for further repair or to the rider's home country as repatriation, it shall be done at the rider's own expenses and risk.
9. The remaining Terms and Conditions shall be the same as for General Warranty.
10. The Borderless Warranty shall be governed by the laws of India and you hereby consent to the exclusive jurisdiction and venue of courts in New Delhi, India.

For updated Authorized Service network, visit <https://www.royalenfield.com/in/en/locate-us/service-centres>.

If you are traveling abroad and require warranty assistance or advice from a Royal Enfield Authorized Dealer, visit www.royalenfield.com/borderless-warranty/ for more information.

CUSTOMER'S RESPONSIBILITY

1. The customer shall take all possible steps to prevent further damage as soon as any problem is apparent and within a reasonable time from such damage, notify Royal Enfield Authorized Dealer / Service Centre of such damage.
2. By purchasing any Motorcycle produced by RE, the customer assumes responsibility to ascertain and follow all applicable laws, and international laws in having, owning, using, or transporting any Motorcycle. The customer expressly agrees to indemnify and hold harmless RE for all claims resulting directly or indirectly from the purchase, ownership, transportation, or use of the Motorcycle in violation of applicable laws. RE is not liable for misuse of any Motorcycle purchased from an authorised Dealer / Distributor.

LIMITATION OF LIABILITY

Notwithstanding anything contrary contained in this policy, Royal Enfield's liability under this warranty is limited to the repair the defective Motorcycle, at its sole discretion. In no event, shall Royal Enfield be liable for any indirect, special or consequential or incidental damages or for injury to person or property, or for loss of time or for any commercial loss, or inconvenience or any other incidental or punitive or consequential loss arising from the use of Motorcycles.

EMISSION CONTROL SYSTEM WARRANTY

YOUR WARRANTY RIGHTS AND OBLIGATIONS

The Environmental Protection agency, California Air Resources Board and Royal Enfield Motor company are pleased to explain the emission control system warranty on your new motorcycle. In California, new motor vehicles must be designed, built and equipped to meet the State's stringent anti-smog standards. Royal Enfield Motor Company must warrant the emission control system on your motorcycle for the periods of time listed below provided there has been no abuse, unapproved modification, neglect or improper maintenance of your motorcycle.

Your emission control system may include parts such as the carburetor or fuel-injection system, the ignition system, catalytic converter, and engine computer. Also included may be hoses, connectors and other emission-related assemblies.

Where a warrantable condition exists, within the warranty period noted below, your authorized Royal Enfield dealer will repair your motorcycle at no cost to you including diagnosis, parts and labor.

EMISSION CONTROL SYSTEM WARRANTY

MANUFACTURER'S WARRANTY COVERAGE

For a period of use of five years or 30,000 km (18641 mi), whichever first occurs, beginning on the date the motorcycle is delivered to the ultimate purchaser or, if the motorcycle is placed in service as a demonstrator or company motorcycle prior to sale at retail, the date it is first placed in service.

If any emission related part on your motorcycle is defective, the part will be repaired or replaced by Royal Enfield Motor Company. This is your emission control system defects warranty.

OWNER'S WARRANTY RESPONSIBILITIES

As the motorcycle owner, you are responsible for the performance of the required maintenance listed in your Owner's Manual. Royal Enfield recommends that you retain all receipts covering maintenance on your motorcycle, but Royal Enfield cannot deny emissions warranty coverage solely for the lack of receipts or for your failure to ensure the performance of all scheduled maintenance.

EMISSION CONTROL SYSTEM WARRANTY

You are responsible for presenting your motorcycle to an authorized Royal Enfield dealer as soon as a problem exists.

The warranty repairs should be completed in a reasonable amount of time, not to exceed 30 days.

As the motorcycle owner, you should also be aware that Royal Enfield may deny you warranty coverage if your motorcycle or a part has failed due to abuse, neglect, improper maintenance or unapproved modifications.

If you have any questions regarding your warranty rights and responsibilities, you should contact Royal Enfield Customer Service Department at 1-800-258-2464 (US only) or 1-414-343-4056, or the California Air Resources Board at 4001 Iowa Avenue, Riverside, California 92507.

ADDITIONAL WARRANTY TERMS

The warranty period starts the date the motorcycle is delivered to the ultimate purchaser or, if the motorcycle is placed in service as a demonstrator or company motorcycle prior to sale at retail, the date it is first placed in service. The emission control system of each new Royal Enfield motorcycle was designed, built and tested using only Genuine Royal Enfield parts and with these parts the motorcycle is certified as being in conformity with Environmental protection agency and California emission control regulations.

EMISSION CONTROL SYSTEM WARRANTY

We recommend that you take your motorcycle to an authorized Royal Enfield dealer for repairs under this warranty. The dealer has factory-trained mechanics and genuine Royal Enfield parts. However, in the case of an "emergency" (as defined below), you could have repairs performed at any available service establishment or by the owner, using any replacement part. An authorized Royal Enfield dealer not being reasonably available, or a part not being available within a reasonable time period (not to exceed 30 days from the time the motorcycle is initially presented to a Royal Enfield dealer for repair) constitutes an emergency. Royal Enfield will reimburse the owner for such repairs, including diagnosis, only if it is established that the repairs are covered under this emission warranty.

Royal Enfield's parts reimbursement, however, will not exceed our suggested retail price for all warranted parts replaced and our labor reimbursement will be limited to our recommended time allowances for emission system repairs at the geographically appropriate hourly labor rate.

To obtain reimbursement from Royal Enfield for such emergency repairs, you must keep all failed parts and original receipts, so you can present them to an authorized Royal Enfield dealer for inspection. Royal Enfield recommends that you bring your motorcycle to an authorized dealer for inspection to ensure that the emergency repairs were done properly.

EMISSION CONTROL SYSTEM WARRANTY

Remember: Use of non-Royal Enfield replacement parts may impair the effectiveness of the emission control system or otherwise damage your motorcycle. If other than genuine Royal Enfield parts are used for maintenance, replacement or repair of components affecting emission control, you should obtain written assurances that such non Royal Enfield parts are warranted by their manufacturer to be equal in quality to Genuine Royal Enfield parts in both performance and durability. The use of non-Royal Enfield replacement parts does not invalidate the existing warranty, if any, on other Royal Enfield components unless the non-Royal Enfield parts cause damage to warranted parts or result in the creation of an emissions non-compliant motorcycle. However, Royal Enfield assumes no liability under this warranty with respect to any parts which are not genuine Royal Enfield Parts, unless Royal Enfield Parts cause damage to nongenuine Royal Enfield Parts.

WHAT IS COVERED BY THIS EMISSION WARRANTY

The emission control system warranty covers the following "warranted parts" only:

Air cleaner assembly, cam shaft, spark plug, ignition coil, ignition wires, vapor valve, catalytic converter, crankcase, breather, MAP sensor, TMAP sensor, intakeair temperature sensor, throttle position sensor, fuel injectors, induction module or throttle body, engine temperature sensor, electronic control unit, oxygen sensors, carbon canister, purge control valve, fuel tank (non-cosmetic failures only), leaks, fuel vapor separator, fuel cap. If used on the above: hoses, clamps, fittings, tubing, sealing gaskets and mounting hardware.

EMISSION CONTROL SYSTEM WARRANTY

WHAT IS NOT COVERED BY THIS EMISSION WARRANTY

The emission control system warranty does not cover:

Malfunctions in any "warranted parts" caused by any of the following: abuse, misuse, unapproved modification or alteration, tampering, disconnection, or improper or inadequate maintenance. The warranty also does not cover replacement of listed parts in the event that the vehicle has been rendered emissions non-compliant in the EPA 49 states and state of California through actions noted above.

Damage resulting from accident, acts of nature or other events beyond the control of Royal Enfield.

The repair or replacement of "warranted parts" which are scheduled for replacement prior to 30,000 km (18641 mi), once these parts have been replaced at the first replacement interval as part of required maintenance services.

Repairs and services performed by anyone other than an authorized Royal Enfield Dealer (except in case of emergency as defined above).

Loss of time, inconvenience, loss of use of the motorcycle, towing of the vehicle, or commercial loss and/or consequential damages.

Repairs on any motorcycle of which odometer mileage has been changed so that mileage cannot be readily determined.

NOISE CONTROL SYSTEM WARRANTY

The following warranty applies to the noise control system and is in addition to the Limited Warranty, Emission Control System Warranty & California Air Resources Board Regulations. Evaporative Emission Control system Warranty.

(Applicable only for motorcycles sold within the state of California.)

Royal Enfield Motors warrants the first owner and each subsequent owner, that this motorcycle is designed and built so as to conform, at the time of sale, with applicable regulations specified by the U.S. Federal Environmental Protection Agency and California Air Resources Board Regulations, that the Noise control system emission related parts fitted to this motorcycle are free from defects in materials and workmanship which may cause this motorcycle not to meet the US Federal Environmental Protection Agency standards for a period of 5 years or 18,641 Miles (30,000 km), whichever occurs first, from the date of first use of the motorcycle.

The Warranty period shall begin, on the date the motorcycle is delivered to the first retail purchaser or from the first date the motorcycle is used as a demonstrator or as a display and/or trial motorcycle.

NOISE CONTROL SYSTEM WARRANTY

THE FOLLOWING ITEMS ARE NOT COVERED BY THE NOISE CONTROL SYSTEM WARRANTY:

1. Failures which may arise as a result of misuse, alterations, accidents or non performance of routine maintenance, as specified in the Owner's Manual.
2. Replacing or removing or modifying any portion of the Noise Control System (consisting of exhaust, air intake/ cleaner assembly) with parts not certified to be genuine and noise legal in the USA for street use.
3. Loss of time, inconvenience, loss of motorcycle use or any other consequential loss or damages.
4. Any motorcycle in which the odometer has been tampered with, or the speedo cable has been disconnected for any reason or is broken and not replaced immediately, due to which the exact distance covered cannot be determined.

RECOMMENDATIONS FOR REQUIRED MAINTENANCE

It is recommended that the routine maintenance of the motorcycle be carried out at specified intervals and any maintenance to the noise control systems should be performed only by an authorised Royal Enfield service dealer and using only genuine Royal Enfield spare parts.

Repairs to the noise control system may be performed by any other qualified service outlet or individual and use of parts other than genuine Royal Enfield supplied parts is permissible, only if such agency or individuals and the non genuine parts used, are certified to comply with the U.S. Environmental protection agency standards.

EVAPORATIVE EMISSION CONTROL SYSTEM WARRANTY

The following warranty applies to the evaporative emission control system.

Royal Enfield motors warrants the first owner and each subsequent owner, that this motorcycle is designed and built so as to conform, at the time of sale, with applicable regulations specified by the evaporative emission control system related parts fitted to this motorcycle are free from defects in materials and workmanship which may cause this motorcycle not to meet applicable regulations period of 5 years or 30,000 km whichever is earlier from the date of first use of the motorcycle.

THE FOLLOWING ARE NOT COVERED BY THE EVAPORATIVE EMISSION CONTROL SYSTEM WARRANTY

1. Failures which may arise as a result of misuse, alterations, accidents or non performance of routine maintenance, as specified in the owner's manual.
2. Replacing, removing or modifying any portion of the Evaporative Emission Control System (consisting of fuel tank, fuel tank cap, canister, purge valve, throttle body, vapor hoses, fuel hoses and hose connectors) with parts not certified by Royal Enfield.
3. Loss of time, inconvenience, loss of motorcycle use or any other consequential loss or damages.
4. Any motorcycle in which the ODO meter has been tampered with or the speedo cable has been disconnected for any reason or is broken and not replaced immediately, due to which the exact distance covered cannot be determined.
5. Normal aging of parts such as fuel hoses, vapor hoses, gaskets and rubber components.

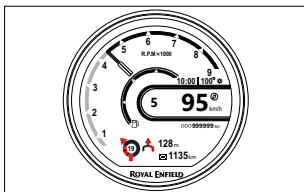
EVAPORATIVE EMISSION CONTROL SYSTEM WARRANTY

RECOMMENDATIONS FOR REQUIRED MAINTENANCE

It is recommended that the routine maintenance of the motorcycle be carried out at specified intervals and any maintenance to the evaporative emission control systems should be performed only by an Authorised Royal Enfield Service Centre and using only genuine Royal Enfield spare parts. Repairs to the evaporative emission control system may be performed by any other qualified service outlet or individual. Use of non-Royal Enfield replacement parts may impair the effectiveness of the evaporative control system or otherwise damage your motorcycle. If other than genuine Royal Enfield parts are used for maintenance, replacement or repair of components affecting evaporative emission control, you should obtain written assurances that such non Royal Enfield parts are warranted by their manufacturer to be equal in quality to Genuine Royal Enfield parts in both performance and durability. The use of non-Royal Enfield replacement parts does not invalidate the existing warranty, if any, on other Royal Enfield components unless the non-Royal Enfield parts cause damage to warranted parts or result in the creation of an emissions non-compliant motorcycle. However, Royal Enfield assumes no liability under this warranty with respect to any parts which are not genuine Royal Enfield Parts, unless Royal Enfield Parts cause damage to non genuine Royal Enfield Parts.

RADIO TYPE APPROVAL

TRIPPER DASH



USA

FCC ID: NT8 - REICGEN1

Max. RF power: 7.9 dBm and Operation frequency range: 2412 to 2472 MHz

Hereby, **Visteon Corporation** declares that the radio equipment type **REICGEN1** is in compliance with Directive 2014/53/EU. The full text of the EU declaration of conformity is available at the following internet address: www.visteondocs.com.

FCC § 15.19 Labelling requirements

This device complies with part 15 of the FCC Rules and Innovation, Science and Economic Development Canada (ISED) license-exempt RSS standard(s). Operation is subject to the following two conditions:

- (1) This device may not cause harmful interference, and
- (2) This device must accept any interference received, including interference that may cause undesired operation.

RADIO TYPE APPROVAL

FCC § 15.21 Information to use

Changes or modifications not expressly approved by the party responsible for compliance could void the user's authority to operate the equipment.

FCC §15.105 statement

This equipment has been tested and found to comply with the limits for a Class B digital device, pursuant to part 15 of the FCC Rules. These limits are designed to provide reasonable protection against harmful interference in a residential installation. This equipment generates, uses and can radiate radio frequency energy and, if not installed and used in accordance with the instructions, may cause harmful interference to radio communications. However, there is no guarantee that interference will not occur in a particular installation. If this equipment does cause harmful interference to radio or television reception, which can be determined by turning the equipment off and on, the user is encouraged to try to correct the interference by one or more of the following measures:

- Reorient or relocate the receiving antenna.
- Increase the separation between the equipment and receiver.
- Connect the equipment into an outlet on a circuit different from that to which the receiver is connected.
- Consult the dealer or an experienced radio/TV technician for help.

RF Exposure Requirements

The unit has been evaluated for SAR exemption and found unit meets with the RF exposure requirements of FCC 1.1307 and RSS 102.

SERVICE/MAINTENANCE RECORD

S.No	Type of service	Schedule	Date	Job card No.	km	Dealer code	Brief details of service

WIRING DIAGRAM

DISCLAIMER

It is recommended that the wiring circuit repair and any other electrical rework should be performed only by an Authorized Royal Enfield Service Centre, failure to adhere this may cause damage to electrical systems and render the warranty of the products as void.



NOTES

NOTES

NOTES

NOTES

NOTES

NOTES

ROYAL ENFIELD

ROYALENFIELD.COM



Part No. RAM00826/B

Edition: 13th November 2024